



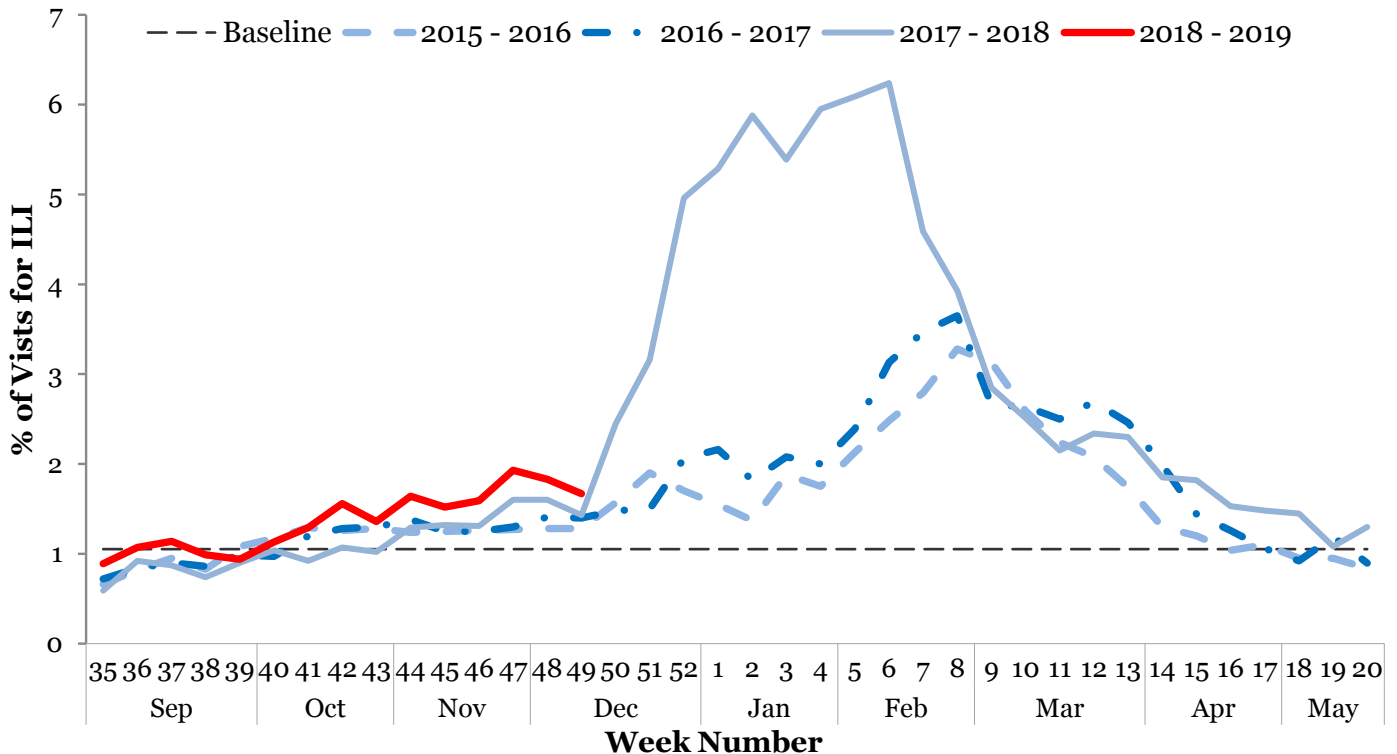
## I. Influenza-like Illness (ILI) Weekly Summary

- Influenza activity is currently **low**. This risk assessment is based on:
  - The proportion of emergency department visits for ILI was 1.67%, above the regional baseline of 1.05%, and has been decreasing for two weeks.
  - The proportion of outpatient provider visits for ILI was 1.06%, above the regional baseline of 0.73%, and has been decreasing for two weeks.
  - The proportion of deaths associated with pneumonia or influenza was 4.02%, below the epidemic threshold of 6.30%.
- Forty-eight (2.40%) laboratory specimens tested positive for influenza: 3 influenza A H1N1, 1 influenza A H3N2, 35 influenza A unknown subtype, and 9 influenza B.
- Zero influenza-associated intensive care unit (ICU) hospitalizations were reported during Week 49. Six ICU hospitalizations have been reported since Week 35.
- Since Week 35, 0 influenza-associated pediatric deaths, 0 clusters of ILI in schools, and 1 outbreak of influenza in a long-term care facility have been reported.
- **Current recommendations** for flu prevention and control are to promote influenza vaccination and respiratory hygiene.

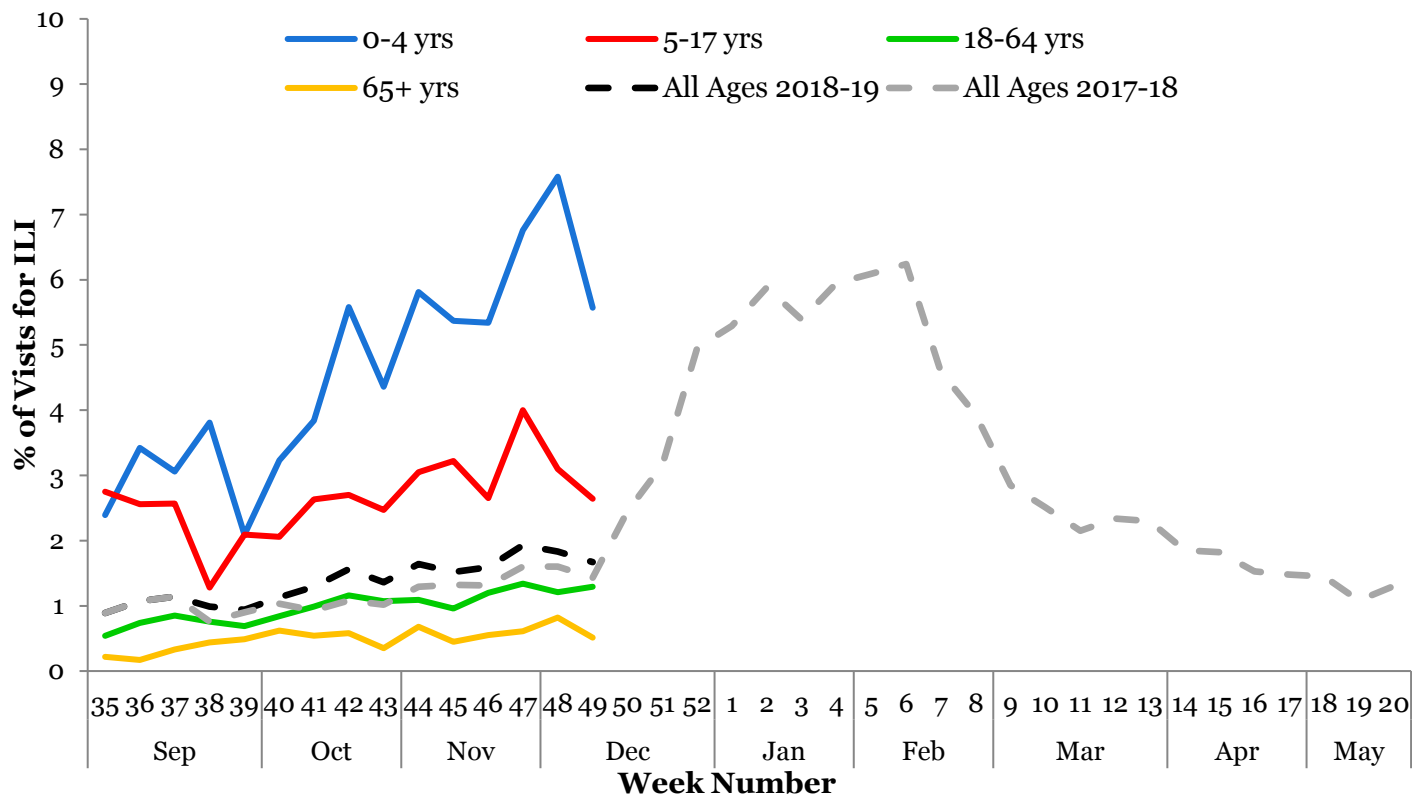
Note: Surveillance for ILI in suburban Cook County involves the weekly collection of data from hospitals, physicians' offices, and laboratories. Thank you to all of our surveillance partners for their help in collecting this information.

## II. Influenza Activity Level / Disease Burden

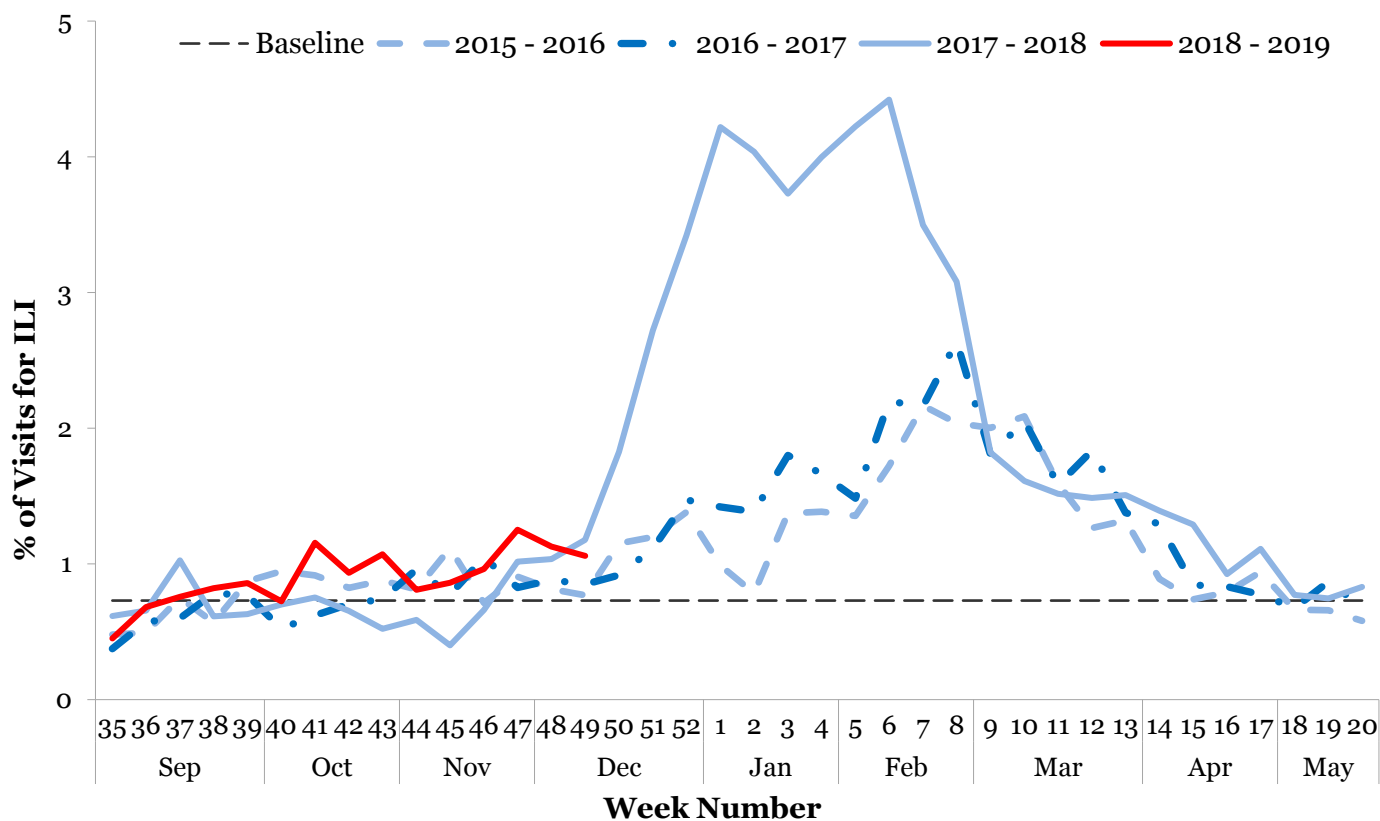
### Emergency Department Syndromic Surveillance<sup>1</sup>



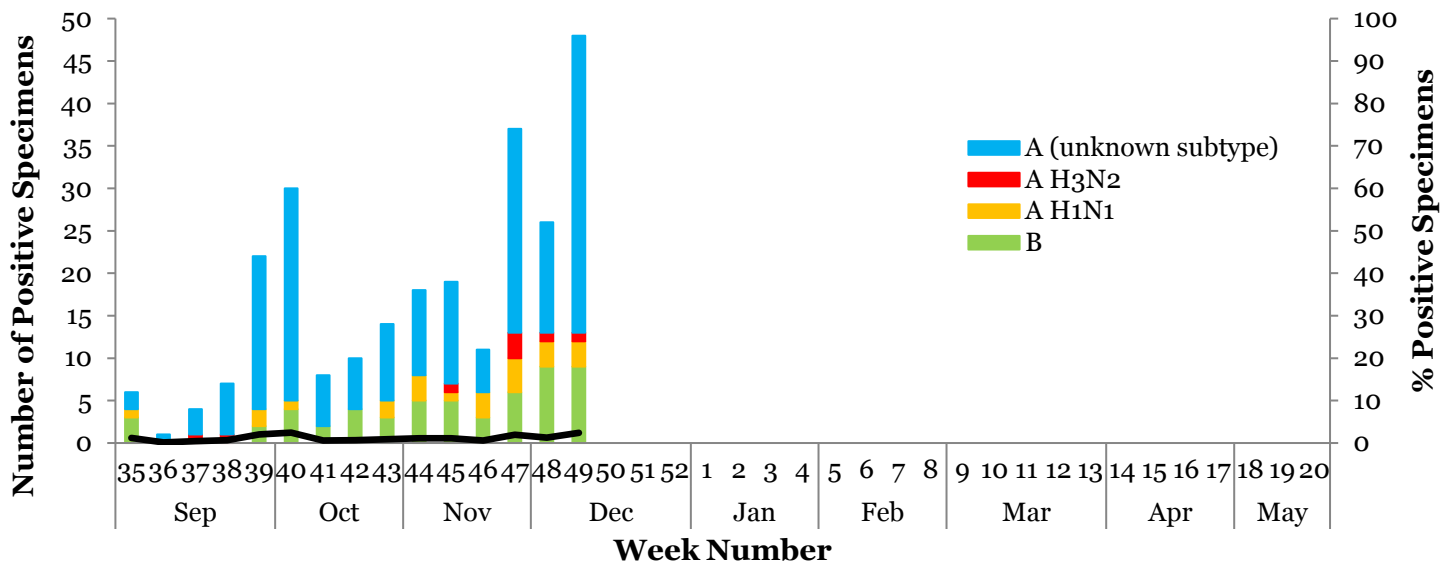
**Syndromic Surveillance by Age Group<sup>1</sup>**



**Outpatient Sentinel Providers<sup>2</sup>**



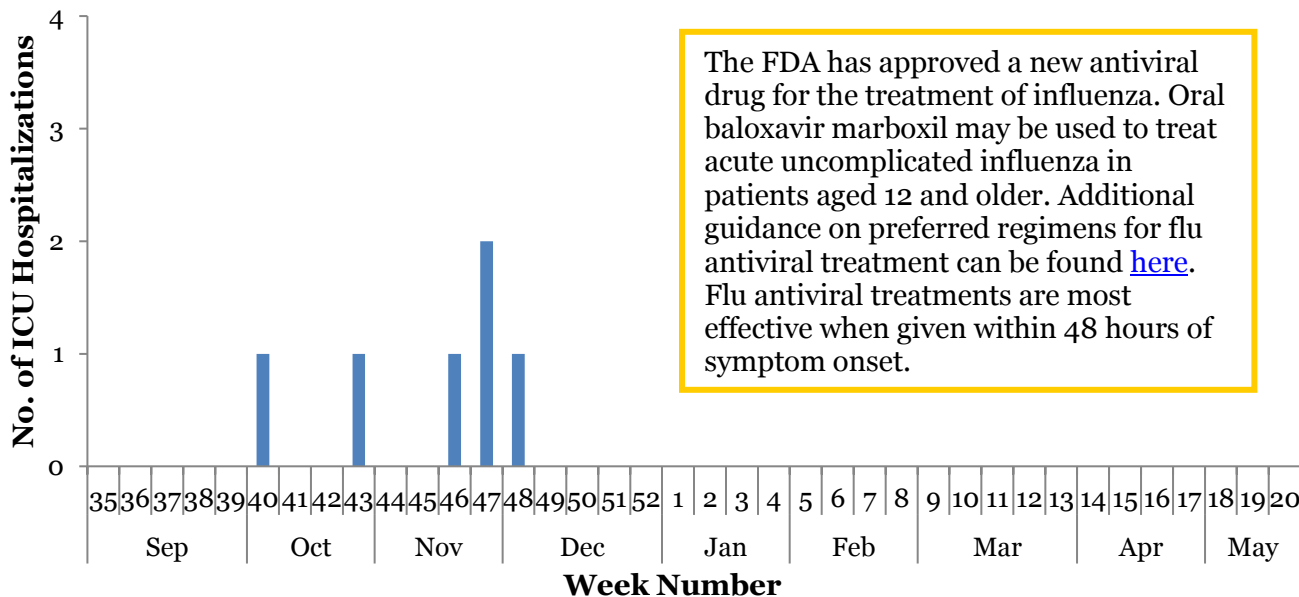
### III. Circulating Strains<sup>3</sup>



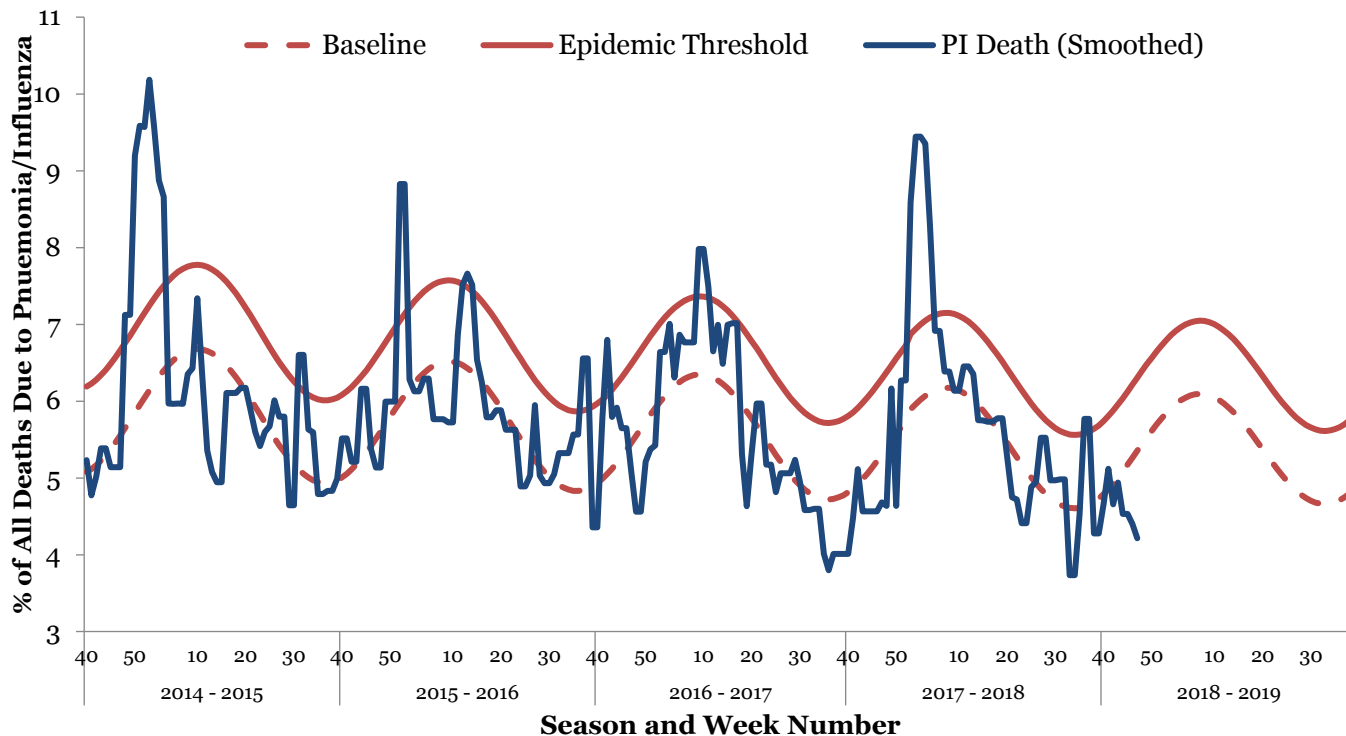
### IV. Seasonal Severity

#### ICU Hospitalizations<sup>4</sup>

Cumulative Case Count	#	Incidence Rate	Per 100,000
Total Cases	6		0.26
<b>Incidence Rate by Age</b>		<b>Incidence Rate by Region</b>	
0-4	0.70	North	0.43
5-24	0	West	0.20
25-49	0.13	Southwest	0
50-64	0.22	South	0.21
65+	0.96		



**Pneumonia and Influenza Mortality<sup>5</sup>**



**V. Regional Flu Activity<sup>1</sup>**

