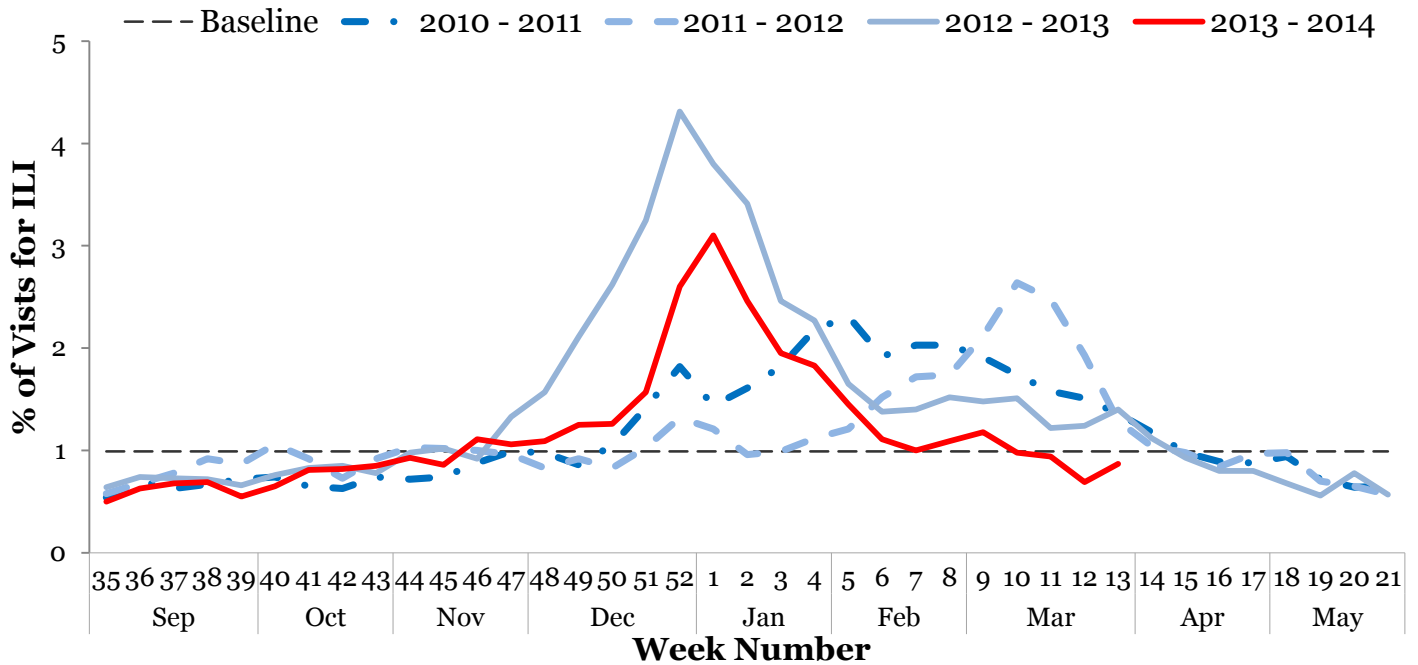




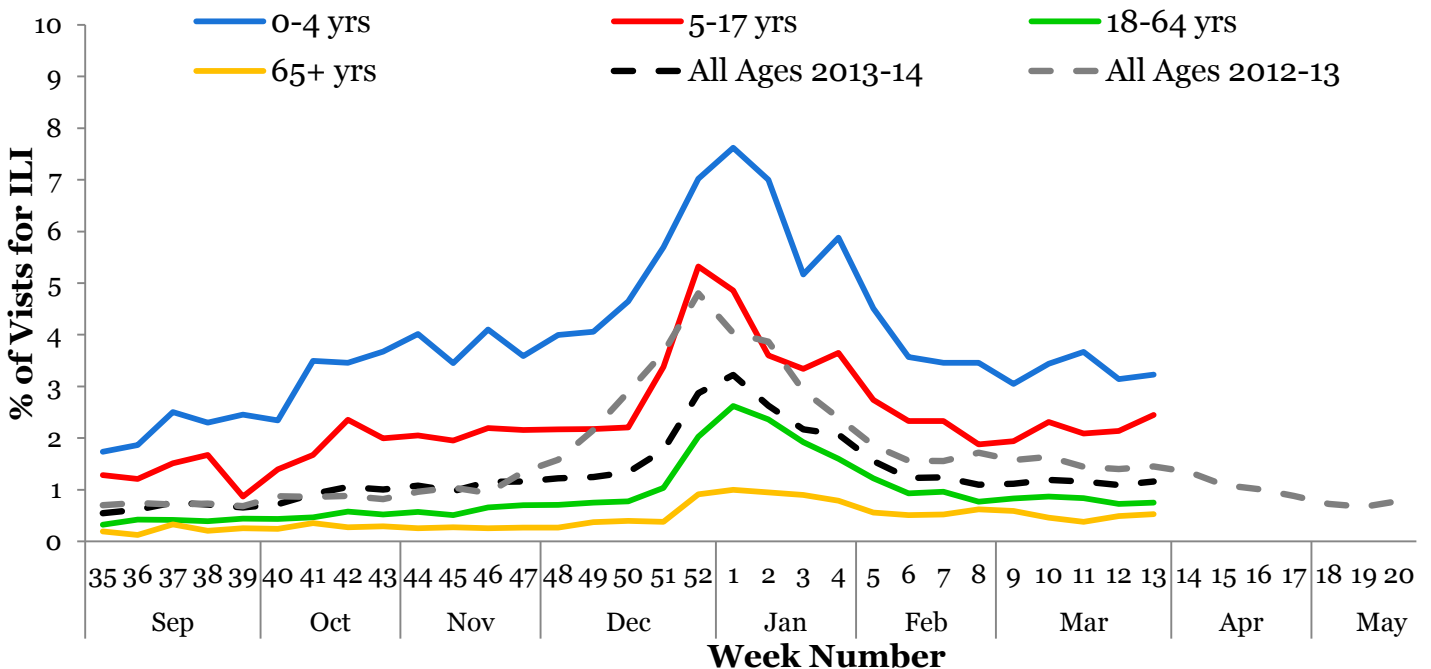
I. Influenza Summary to Date

Influenza surveillance for suburban Cook County** involves the weekly collection of data from a sample of hospitals, private physician’s offices, and laboratory data. Influenza activity is currently low. Our sentinel participants reported the following aggregate measures: Syndromic Surveillance: 0.87% ILI¹, Sentinel Sites: 2.25% ILI². 12 specimens tested positive for influenza (4 influenza A unknown subtype [subtyping not performed] and 8 influenza B). Since Week 35 (8/25/2013), suburban Cook County has had 188 cases of influenza-associated intensive care unit (ICU) hospitalizations. During week 13, 1 ICU hospitalization due to influenza infection was reported to CCDPH. Thank you to all of our surveillance partners for their help in collecting this information.

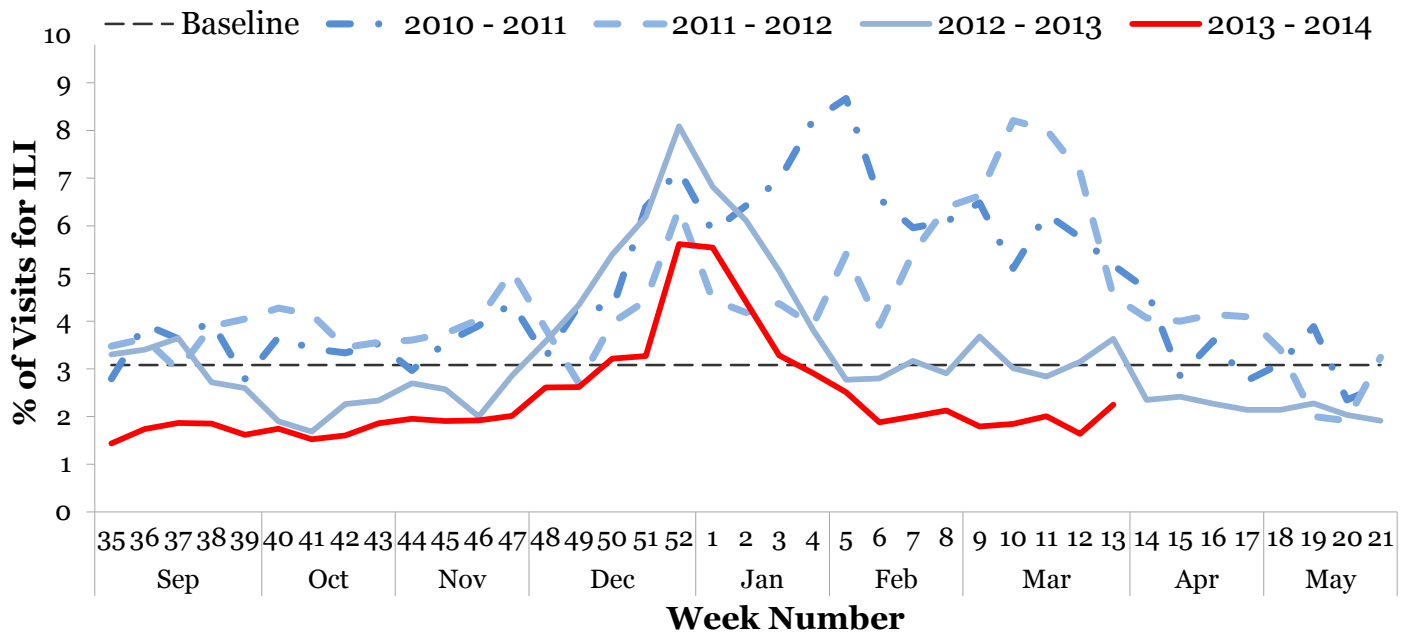
II. Syndromic Surveillance Data¹



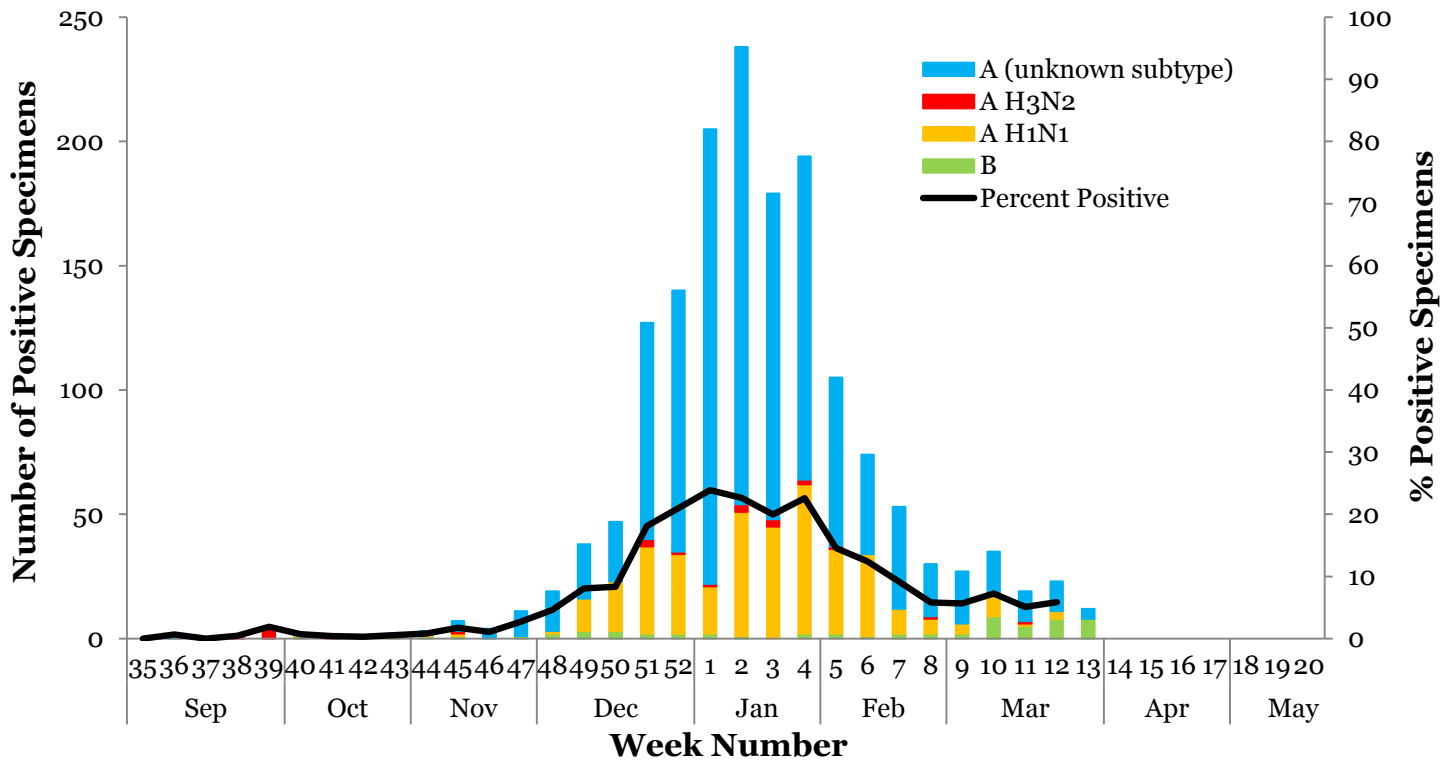
III. Syndromic Surveillance by Age Group Data¹



IV. Sentinel Provider Data²

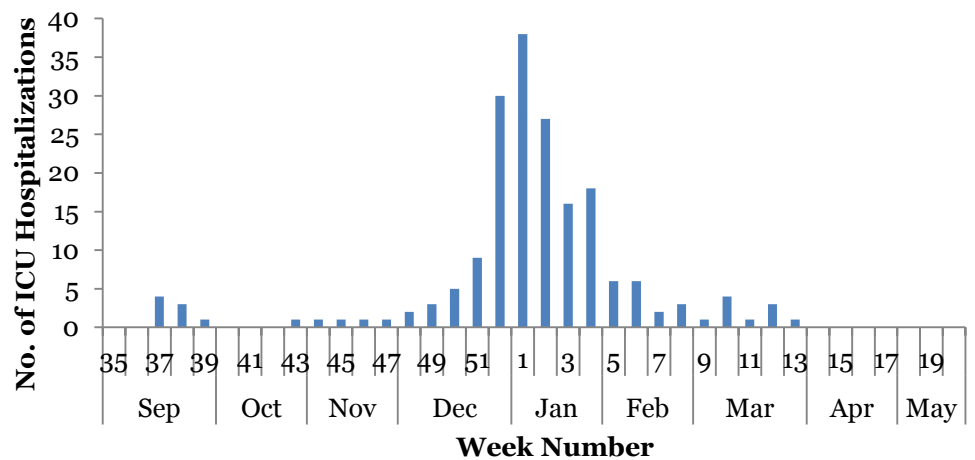


V. Laboratory Surveillance Data³

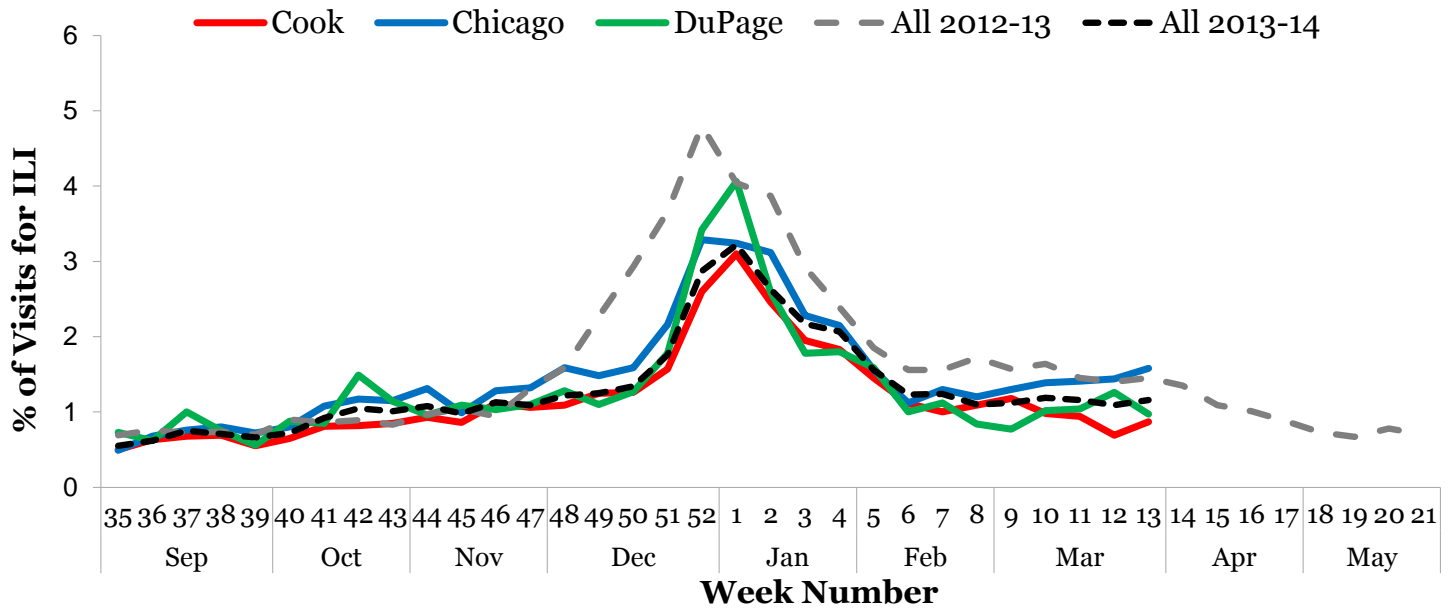


VI. ICU Hospitalization Data⁴

Hospitalized Case Counts	#
Total Cases	188
Incidence by Age	
0-4	8
5-24	15
25-49	31
50-64	63
65+	69
Unknown	2
Incidence by Region	
North	62
West	36
Southwest	25
South	64

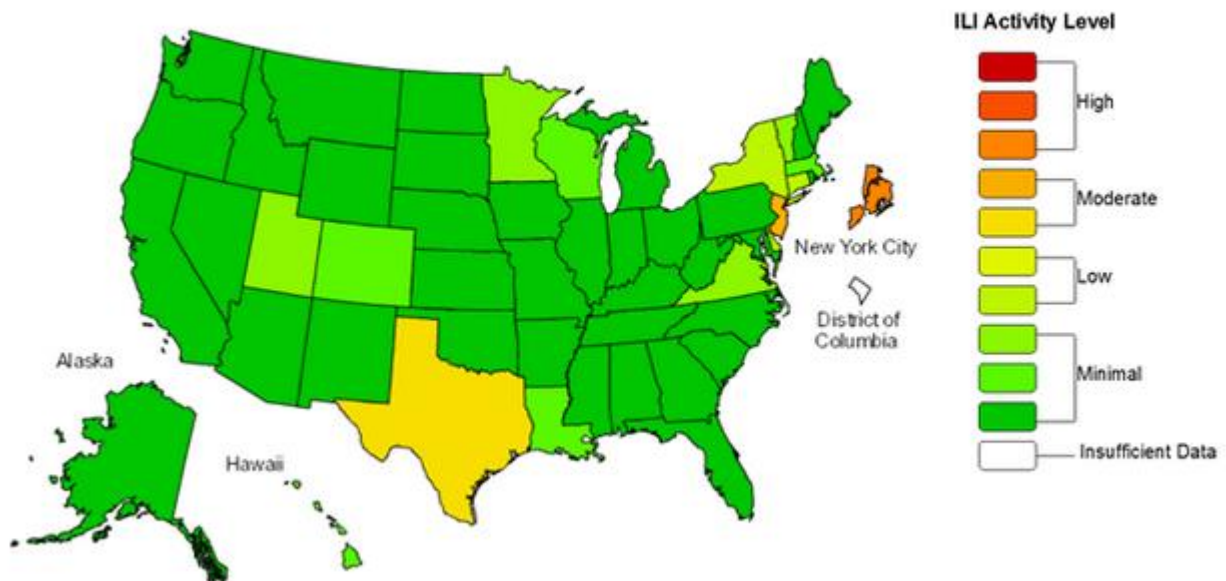


VII. Regional Data



VIII. United States Data[†]

**Influenza-Like Illness (ILI) Activity Level Indicator Determined by Data Reported to ILINet
2013-14 Influenza Season Week 13 ending Mar 29, 2014**



(All data are preliminary and may change as more reports are received.)

For further information about influenza activity see: [City of Chicago Surveillance Report](#), [IDPH Surveillance Report](#), [CDC Surveillance Report](#), [Distribute National Surveillance](#).

1. Syndromic surveillance influenza-like-illness (ILI) syndrome is defined as a symptom complex fever and cough or sore throat from ESSENCE. 45 hospital EDs participate in ESSENCE. $ILI = \# \text{ of ED visits for ILI} / \text{total } \# \text{ of ED visits}$.
2. ILI is defined as fever $\geq 100^\circ\text{F}$, cough and/or sore throat in the absence of a known cause other than influenza. 8 hospital EDs and 3 physician offices are participating CDC sentinel sites.
3. Laboratory surveillance includes viral culture, RT-PCR, and the rapid antigen test. Not all cases are suburban Cook County Residents. Participating laboratories: IDPH, NSUHS, and ACL.
4. Hospitalization and death data are only for suburban Cook County residents (excludes Evanston, Skokie, Oak Park, and Stickney). Data includes reported cases for the presented week.
5. <http://www.cdc.gov/flu/weekly/index.htm>

[†] This map uses the proportion of outpatient visits to health care providers for influenza-like illness to measure the ILI activity level within a state.