

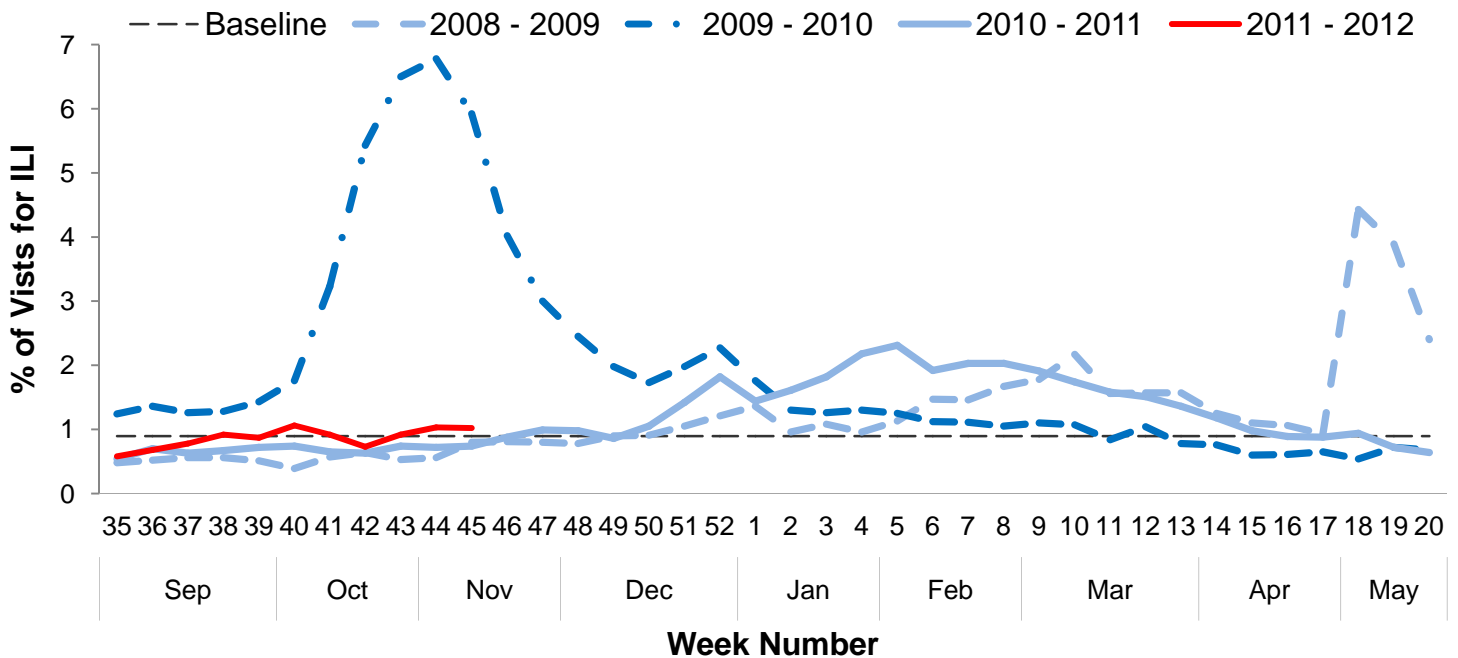


Influenza Surveillance Report
Week 45: Nov 6th – Nov 12th, 2011

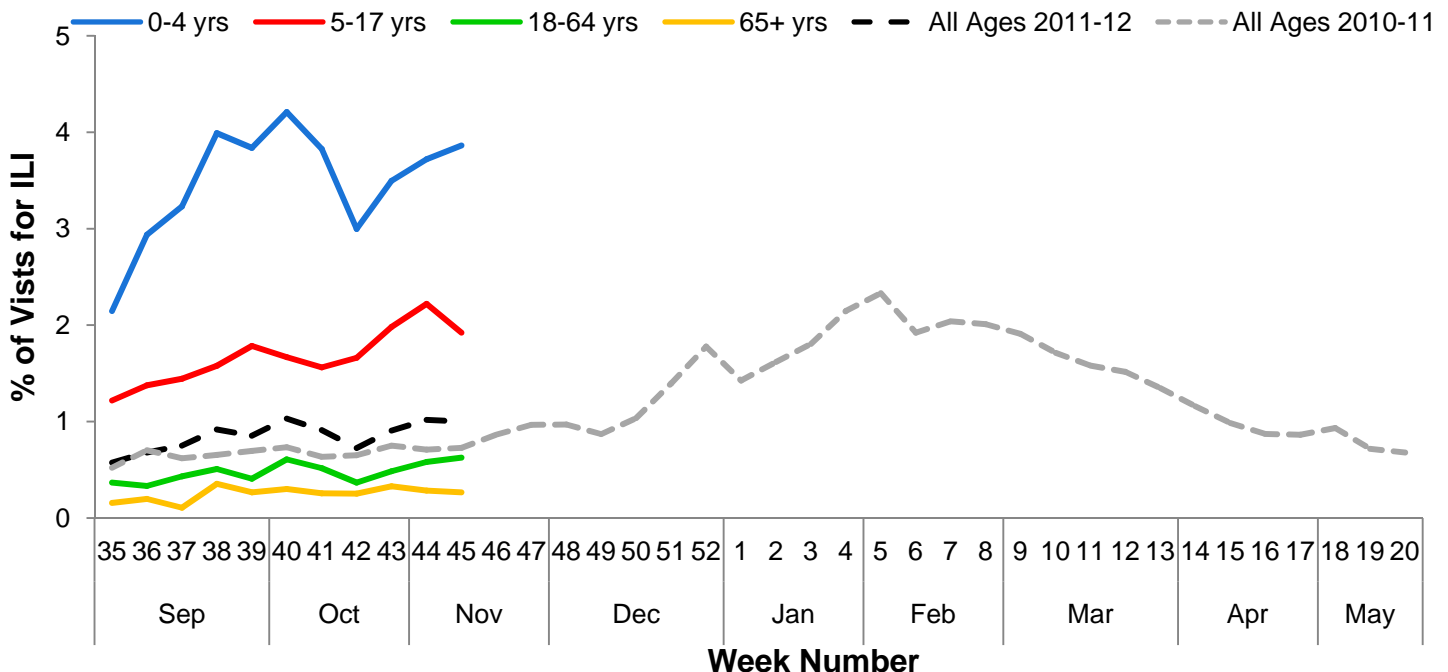
I. Influenza Summary to Date

Influenza surveillance for suburban Cook County** involves the weekly collection of data from a sample of hospitals, private physician's offices, and laboratory data. The current level of influenza activity is as expected for this time of year. Our sentinel participants reported the following aggregate measures: Syndromic Surveillance: 1.02% ILI¹, Sentinel Sites: 4.90% ILI². No specimens tested by participating laboratories were positive for influenza. Since January 2nd, 2011 (week 1), suburban Cook County has had 67 confirmed cases of influenza-associated intensive care unit (ICU) hospitalizations. During week 45, no ICU hospitalizations due to influenza infection were reported to CCDPH. Thank you to all of our surveillance partners for their help in collecting this information.

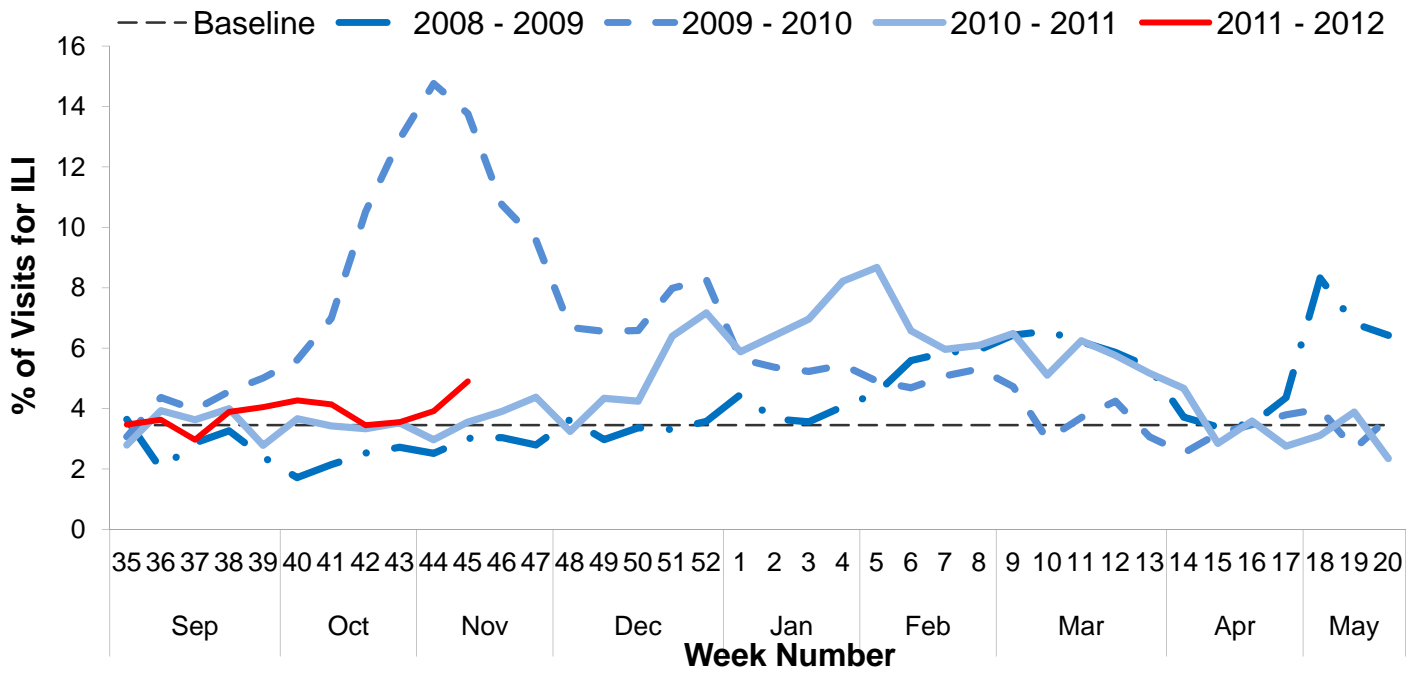
II. Syndromic Surveillance Data¹



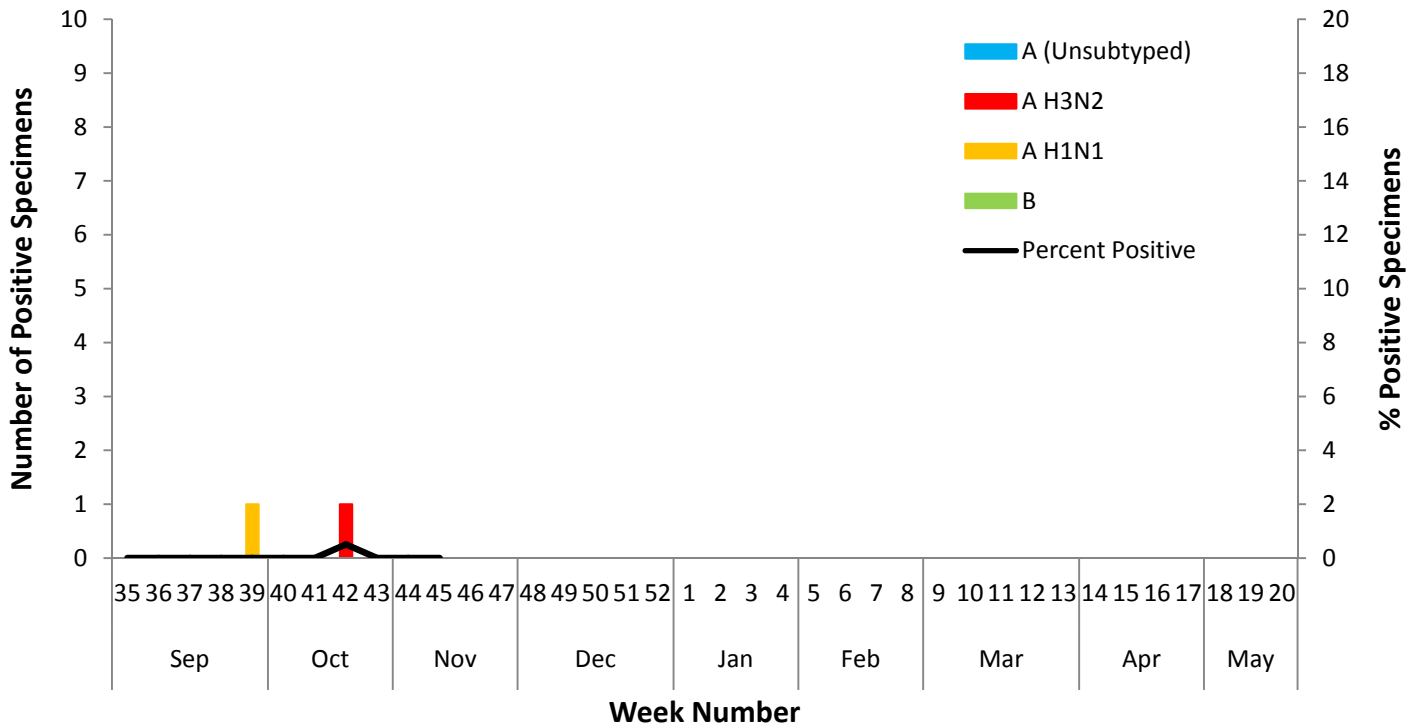
III. Syndromic Surveillance by Age Group Data¹



IV. Sentinel Provider Data²



V. Laboratory Surveillance Data³



VI. ICU Hospitalization Data⁴

| Hospitalized Case Counts | | # |
|--------------------------|--|----|
| Total Cases | | 67 |
| Incidence by Age | | # |
| 0-4 | | 6 |
| 5-24 | | 10 |
| 25-49 | | 11 |
| 50-64 | | 11 |
| 65+ | | 29 |
| Incidence by Region | | # |
| North | | 34 |
| West | | 11 |
| Southwest | | 12 |
| South | | 10 |

