

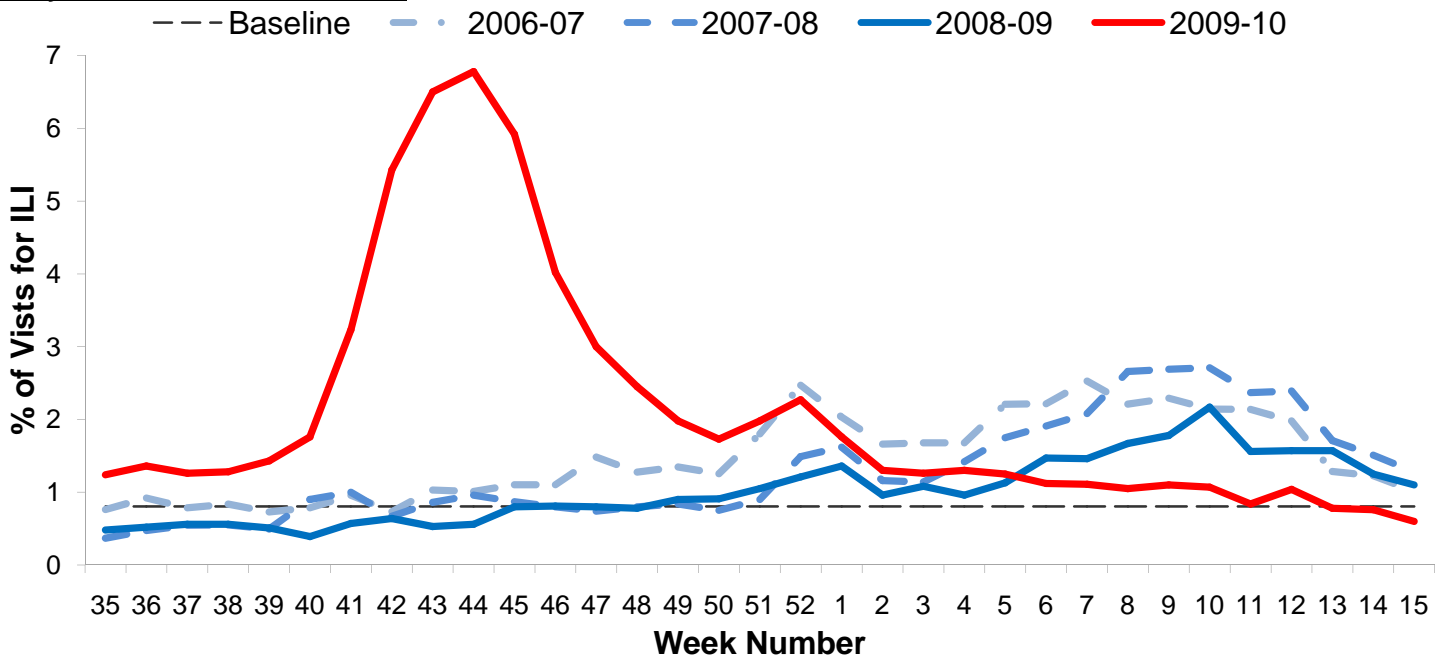


Influenza Surveillance Report Week 15: April 11th – April 17th, 2010

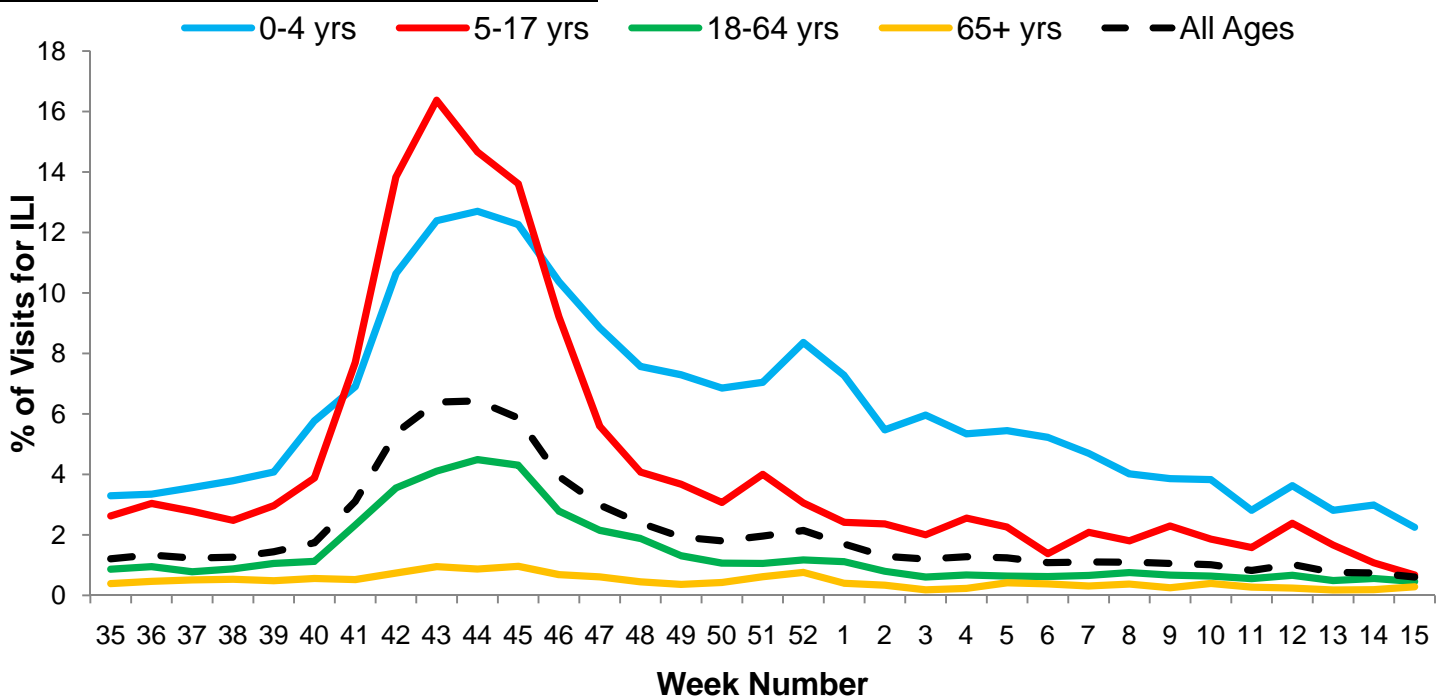
I. Influenza Summary to Date

Influenza surveillance for suburban Cook County** involves the weekly collection of data from a sample of hospitals, private physician's offices, and laboratory data. Our sentinel participants reported the following aggregate measures: Syndromic Surveillance: 0.60% ILI¹, Sentinel Sites: 2.02% ILI². One (0.48%) specimen tested by participating laboratories³ was positive for influenza, of which 100% of sub-typed influenza A viruses were 2009 H1N1. The current level of influenza activity is lower than expected for this time of year. To date, suburban Cook County has had 607 hospitalized cases of confirmed 2009 H1N1, 20 2009 H1N1 deaths (18 adults, 2 pediatric), and 1 pediatric influenza A (unsubtyped) death. During week 15, no 2009 H1N1 hospitalizations were reported to CCDPH. Thank you to all of our surveillance partners for their help in collecting this information.

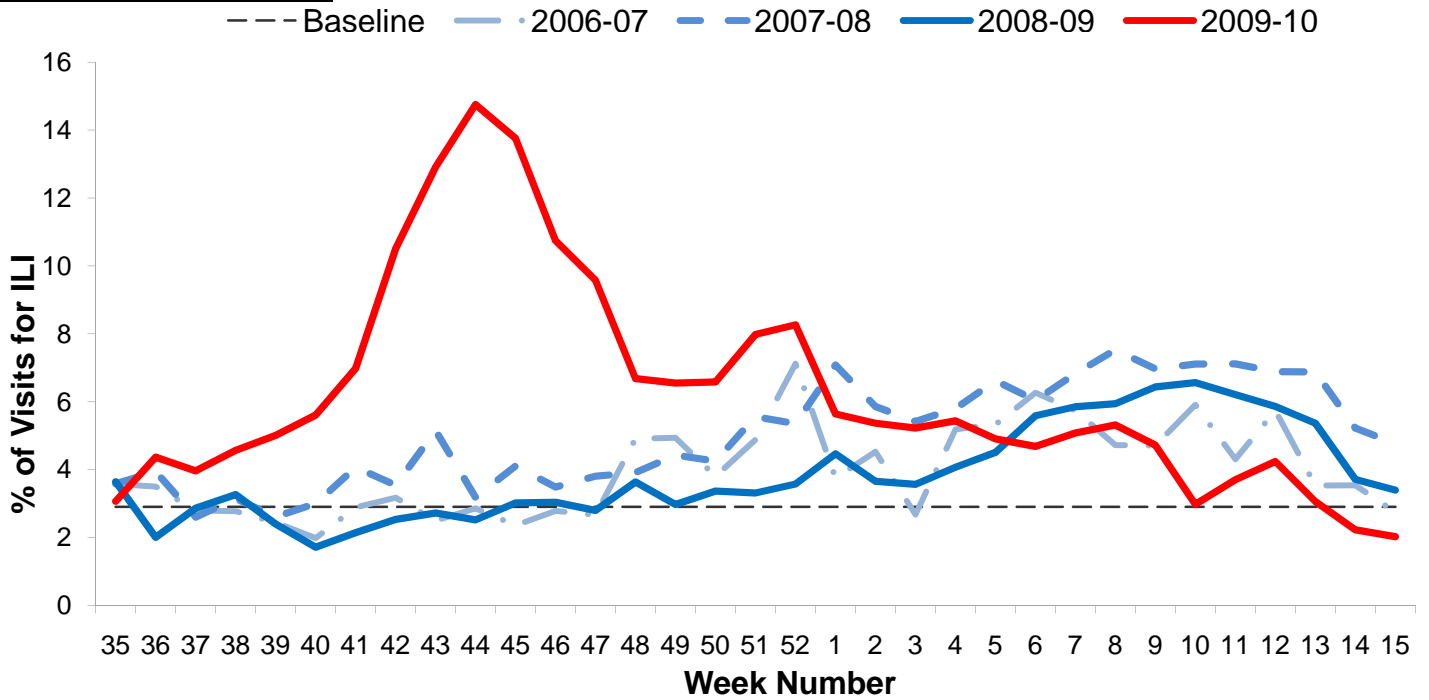
II. Syndromic Surveillance Data¹



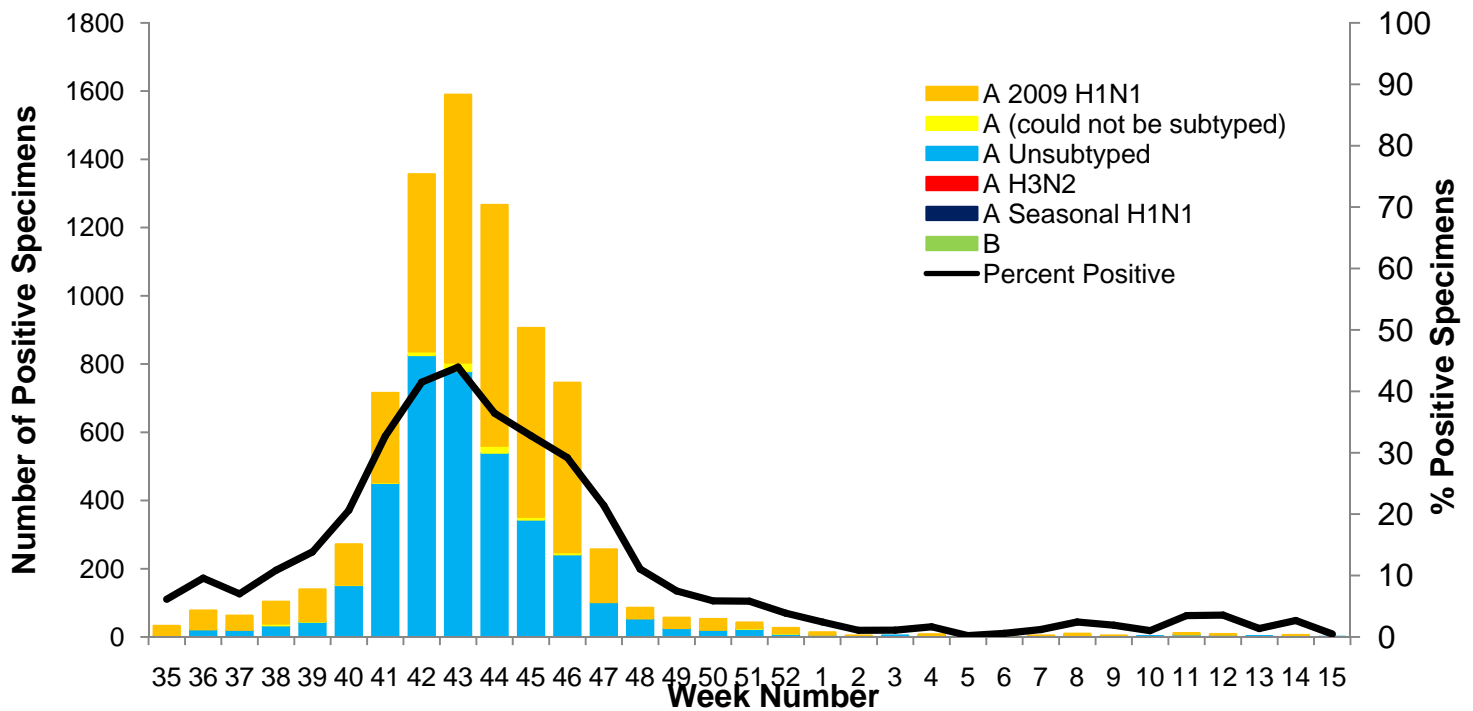
III. Syndromic Surveillance by Age Group Data¹



IV. Sentinel Provider Data²

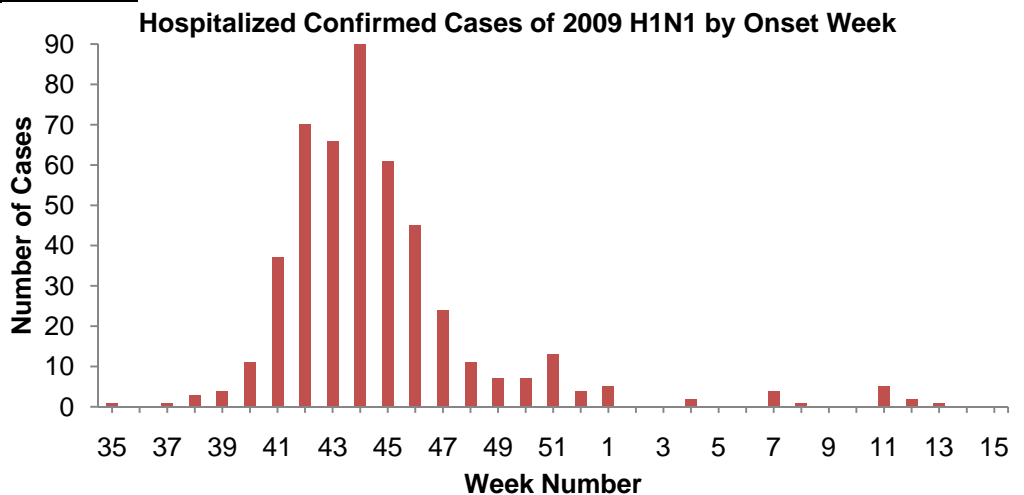


V. Laboratory Surveillance Data³

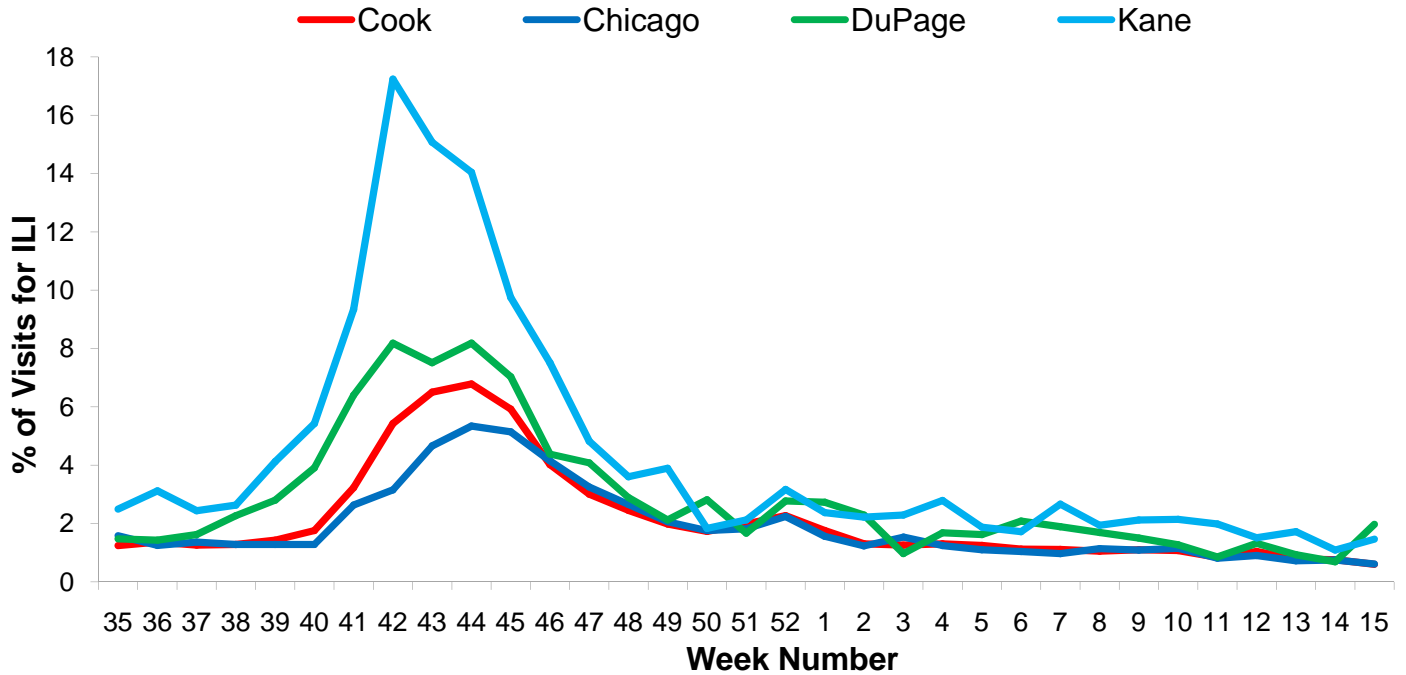


VI. 2009 H1N1 Hospitalization and Death Data⁴

Hospitalized Case Counts		#
Total Cases		607
Total Deaths		20
Incidence by Age		#
0-4		98
5-24		178
25-49		178
50-64		112
65+		41
Incidence by Region		#
North		219
West		159
Southwest		87
South		140



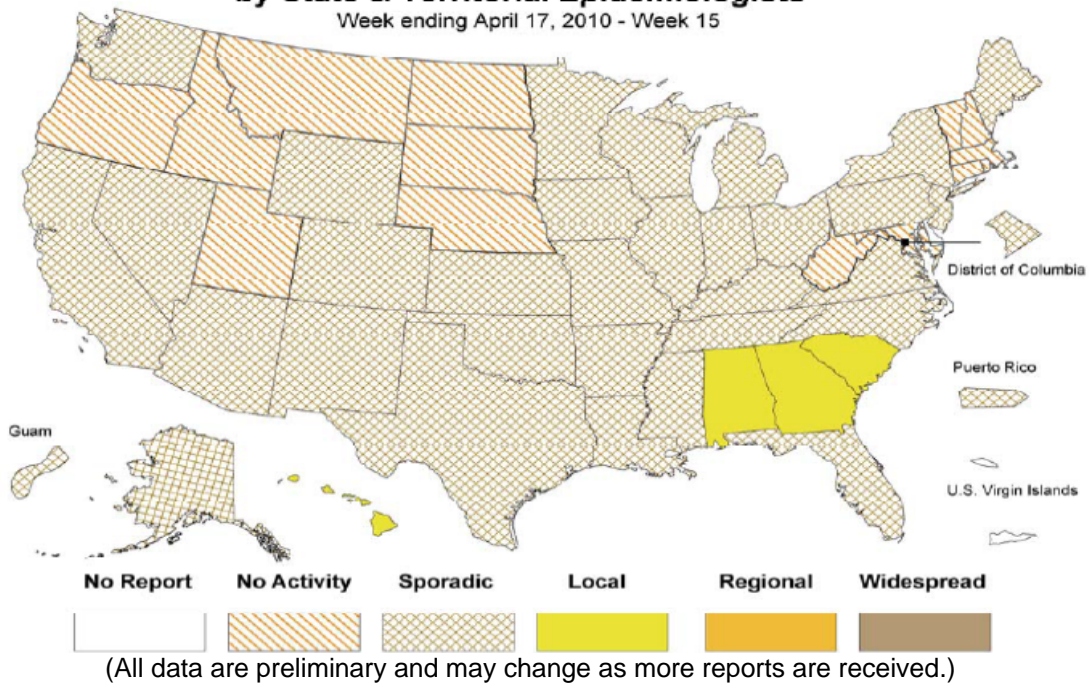
VII. Regional Data



VIII. Illinois and U.S. Data^{5†}

Weekly Influenza Activity Estimates Reported by State & Territorial Epidemiologists*

Week ending April 17, 2010 - Week 15



1. Syndromic surveillance influenza-like-illness (ILI) syndrome is defined as a symptom complex fever and cough or sore throat from ESSENCE. 36 hospital EDs participate in ESSENCE. ILI = # of ED visits for ILI / total # of ED visits.
 2. ILI is defined as fever $\geq 100^{\circ}\text{F}$, cough and/or sore throat in the absence of a known cause other than influenza. 5 hospital EDs and 8 physician offices are participating CDC sentinel sites.
 3. Laboratory surveillance includes viral culture, RT-PCR, and the rapid antigen test. Not all cases are suburban Cook County Residents. Participating laboratories: IDPH, NSUHS, and ACL.
 4. Hospitalization and death data are only for suburban Cook County residents (excludes Evanston, Skokie, Oak Park, and Stickney). Data includes reported cases for the presented week.
 5. <http://www.cdc.gov/flu/weekly/index.htm>
- † **No activity:** no laboratory confirmed cases of influenza and no reported increase in cases of ILI.
Sporadic: small number of laboratory confirmed influenza cases or a single laboratory confirmed influenza in a single region of the state.
Local: Outbreaks of influenza or increases in ILI and recent laboratory confirmed influenza in a single region of the state.
Regional: Outbreaks of influenza or increases in ILI and recent laboratory confirmed influenza in at least two but less than half the region of the state.
Widespread: Outbreaks of influenza or increases in ILI cases and recent laboratory confirmed influenza in at least half the region in the state.