

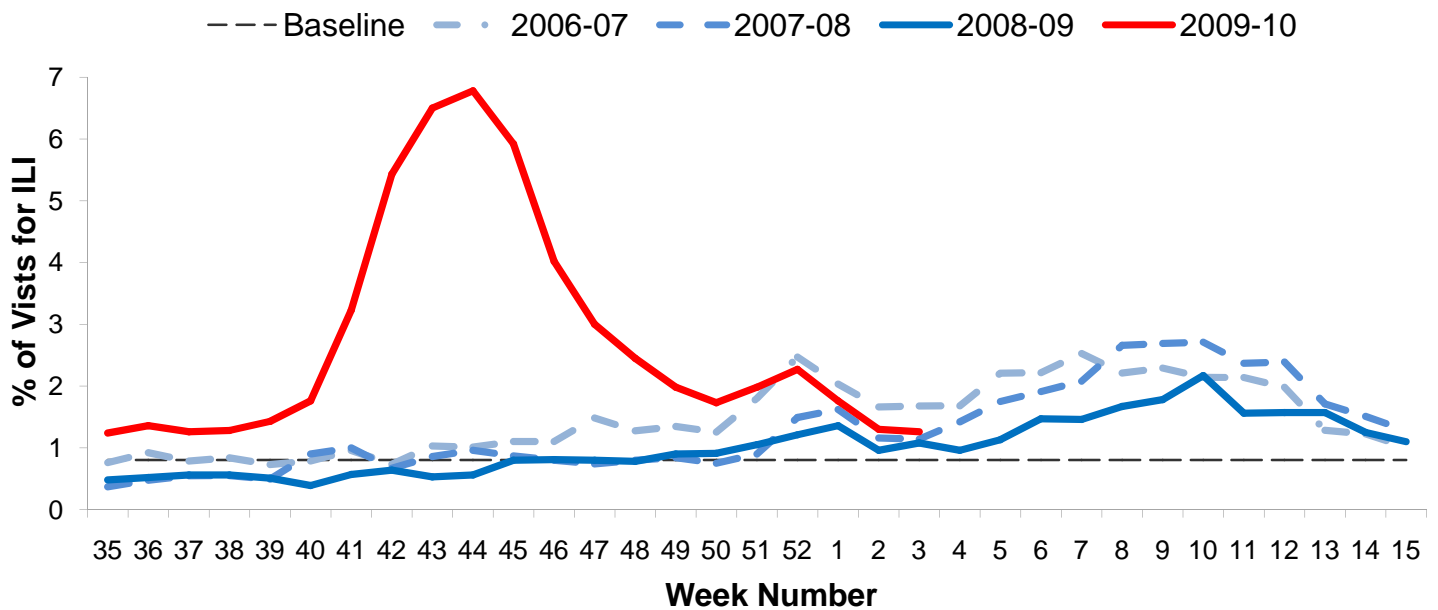


Influenza Surveillance Report Week 3: January 17th – 23rd, 2010

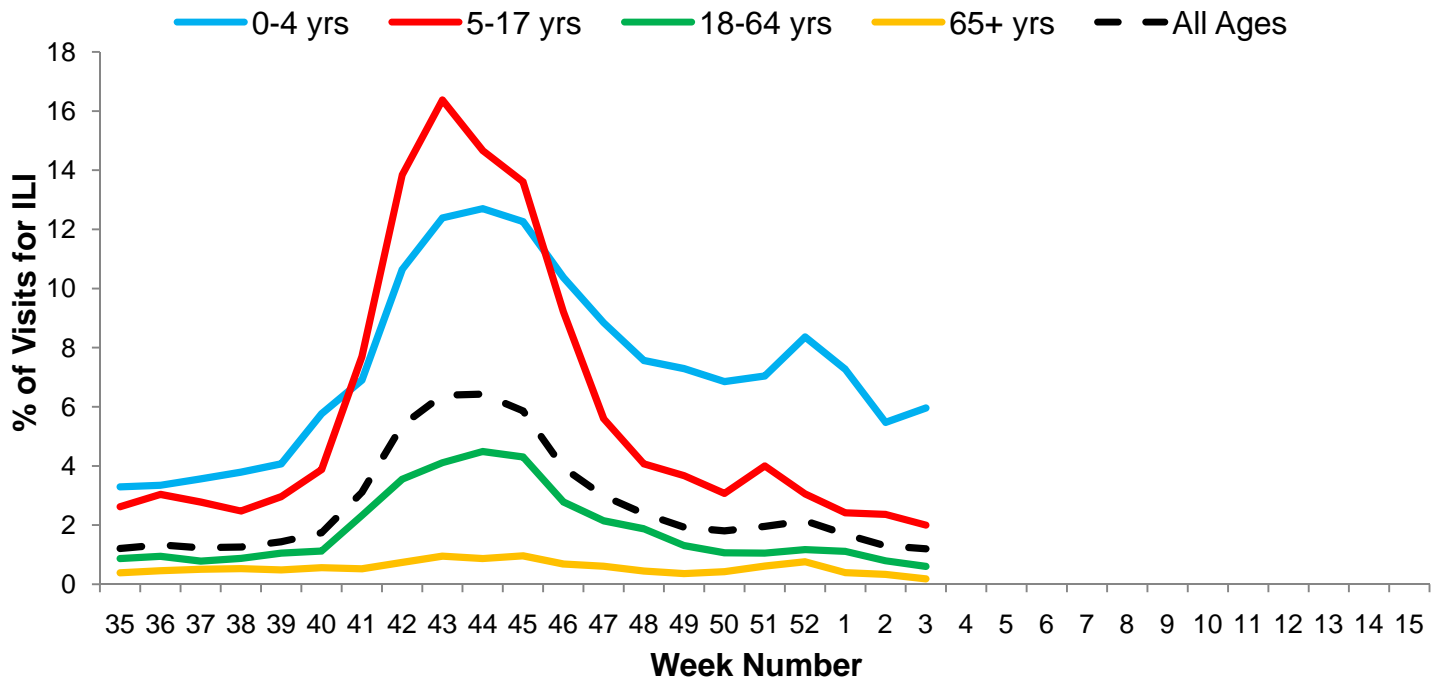
I. Influenza Summary to Date

Influenza surveillance for suburban Cook County** involves the weekly collection of data from a sample of hospitals, private physician's offices, and laboratory data. Our sentinel participants reported the following aggregate measures: Syndromic Surveillance: 1.26% ILI¹, Sentinel Sites: 4.43% ILI². Five (1.12%) specimens tested by participating laboratories³ were positive for influenza, of which 100% of sub-typed influenza A viruses were 2009 H1N1. The current level of influenza activity is typical for this time of year. To date, suburban Cook County has had 586 hospitalized cases of confirmed 2009 H1N1, 16 2009 H1N1 deaths (14 adults, 2 pediatric), and 1 pediatric influenza A (unsubtyped) death. During weeks 2 and 3, two 2009 H1N1 hospitalizations were reported to CCDPH. Thank you to all of our surveillance partners for their help in collecting this information.

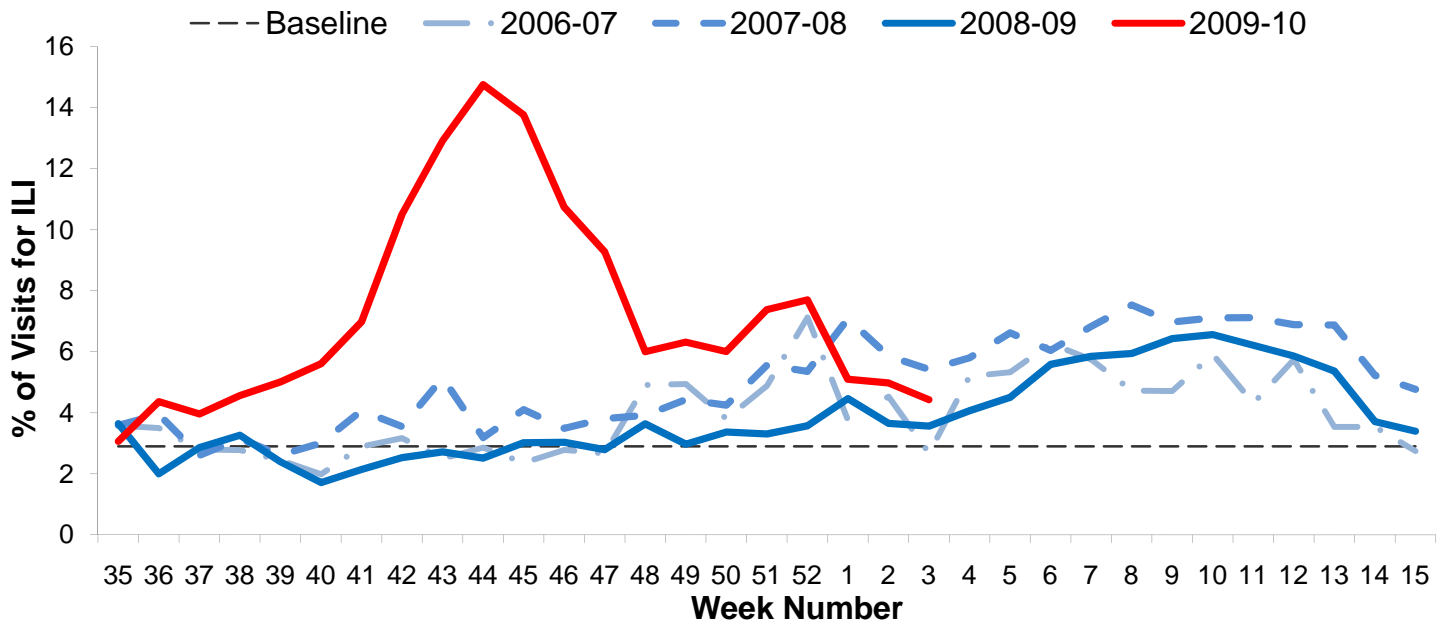
II. Syndromic Surveillance Data¹



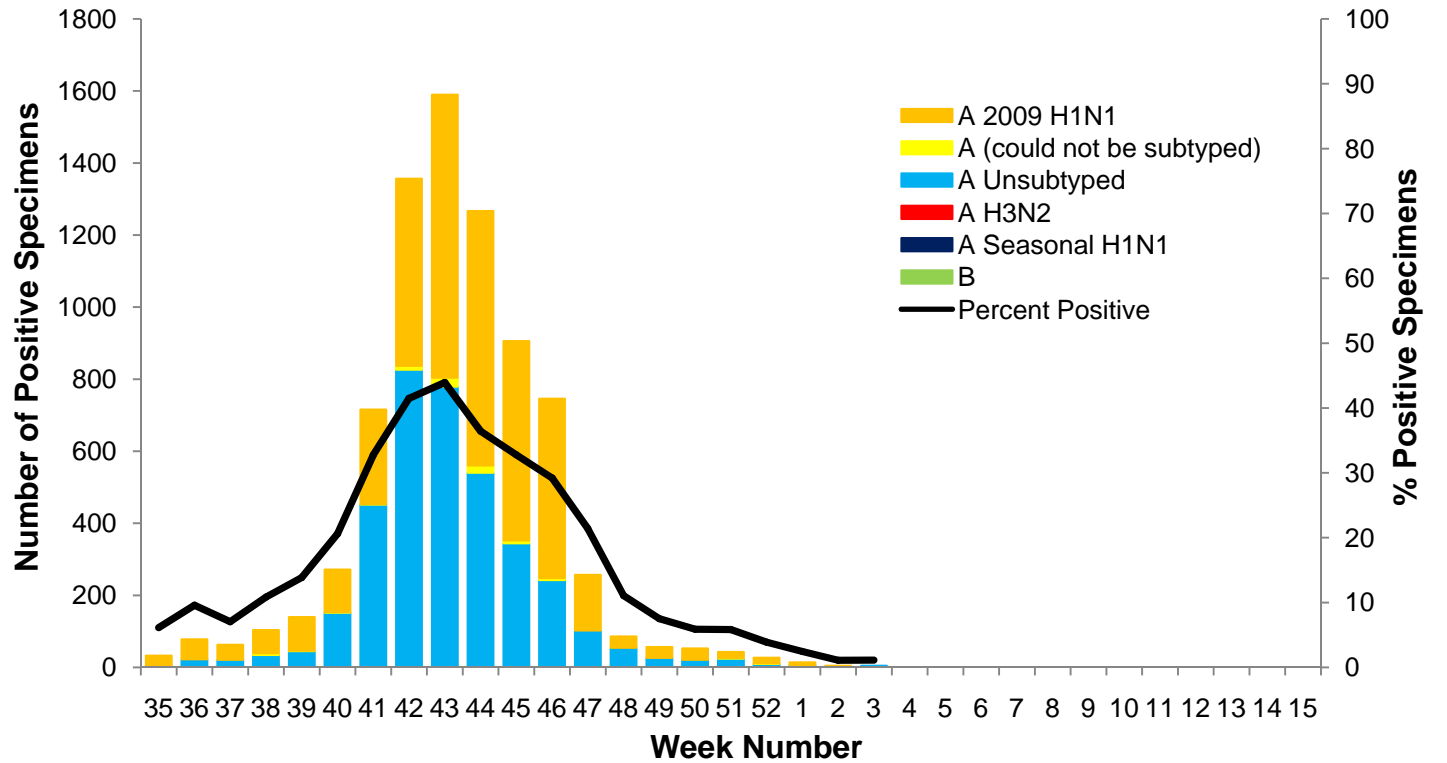
III. Syndromic Surveillance by Age Group Data¹



IV. Sentinel Provider Data²



V. Laboratory Surveillance Data³



VI. 2009 H1N1 Hospitalization and Death Data⁴

Hospitalized Case Counts		#
Total Cases		586
Total Deaths		16
Incidence by Age		#
0-4		95
5-24		170
25-49		175
50-64		107
65+		39
Incidence by Region		#
North		208
West		154
Southwest		84
South		138

