

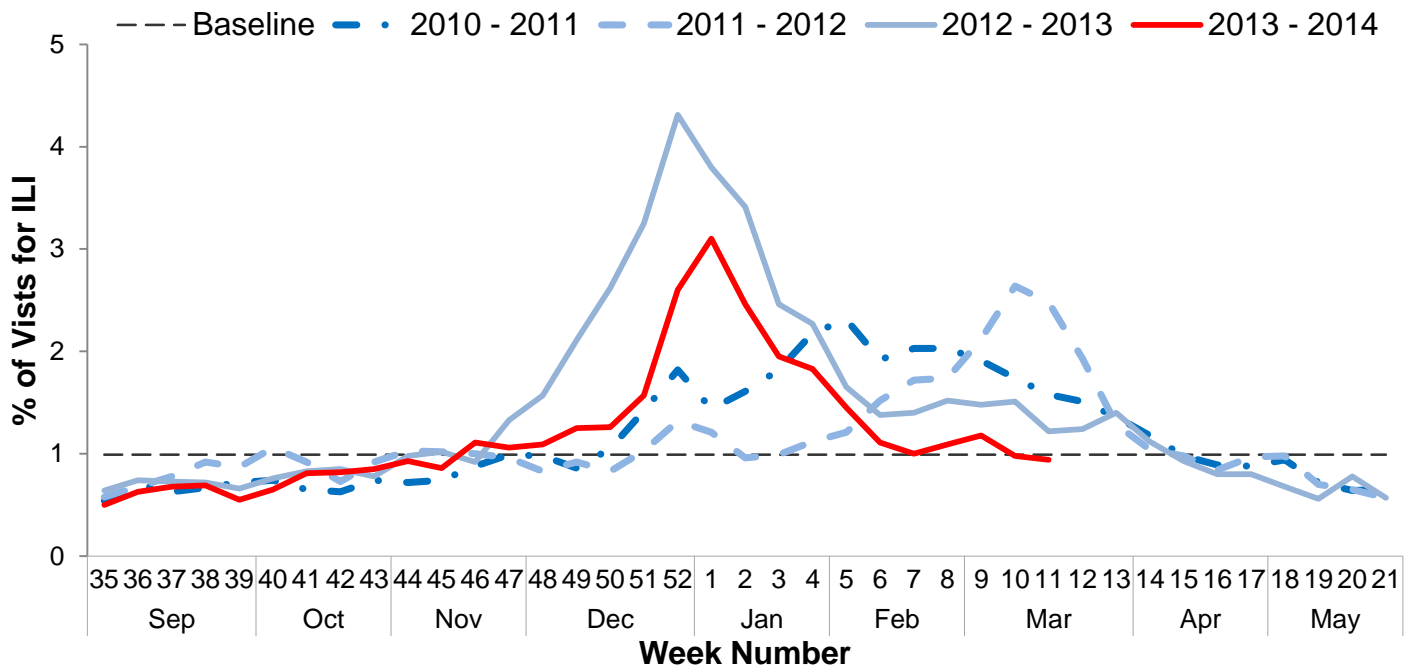


Influenza Surveillance Report
Week 11: March 9th – March 15th, 2014

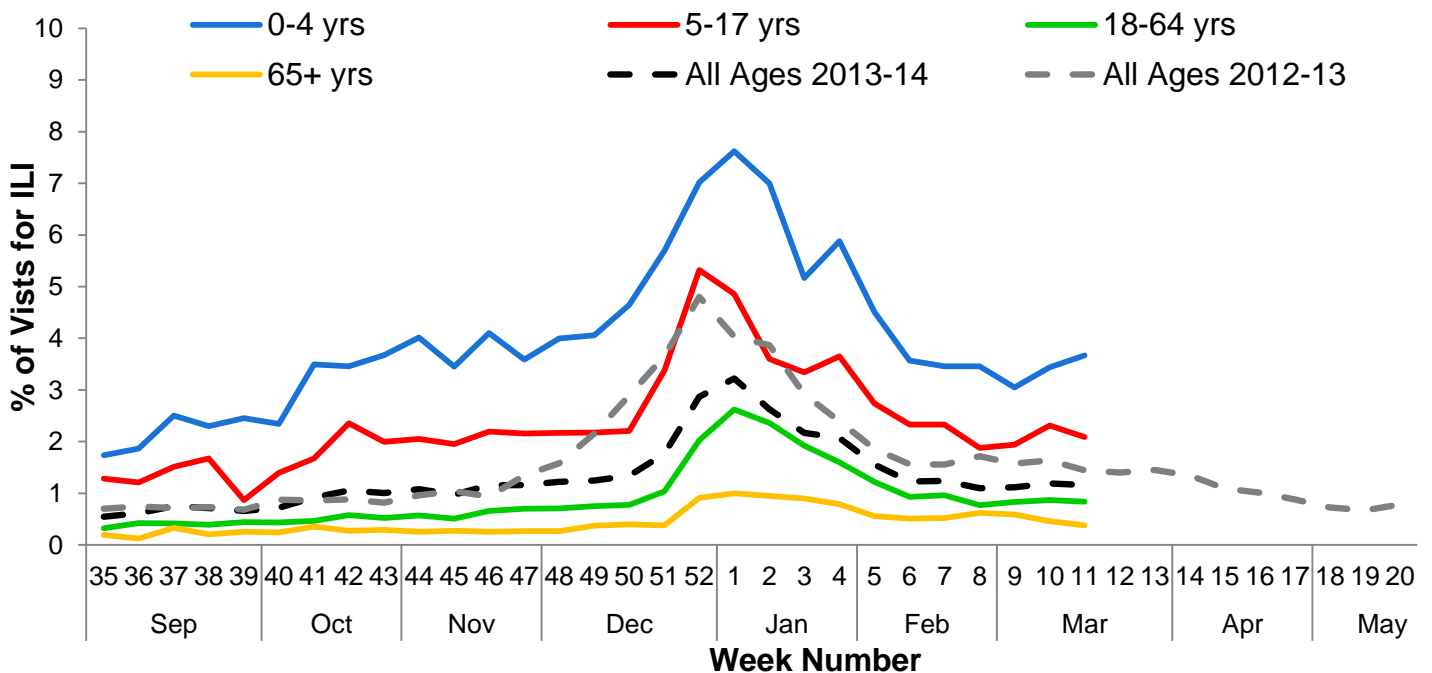
I. Influenza Summary to Date

Influenza surveillance for suburban Cook County** involves the weekly collection of data from a sample of hospitals, private physician's offices, and laboratory data. Influenza activity is currently low. Our sentinel participants reported the following aggregate measures: Syndromic Surveillance: 0.94% ILI¹, Sentinel Sites: 2.01% ILI². Since Week 35 (8/25/2013), suburban Cook County has had 180 cases of influenza-associated intensive care unit (ICU) hospitalizations. During week 11, 1 ICU hospitalization due to influenza infection was reported to CCDPH. Thank you to all of our surveillance partners for their help in collecting this information.

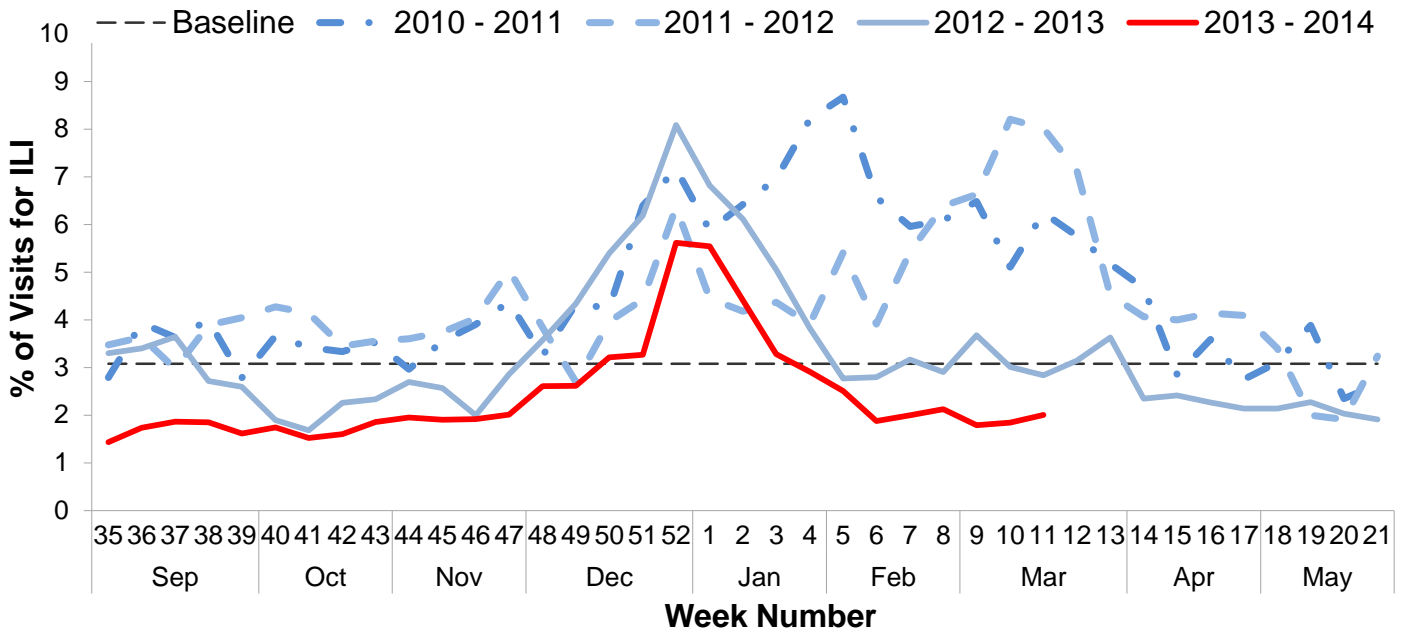
II. Syndromic Surveillance Data¹



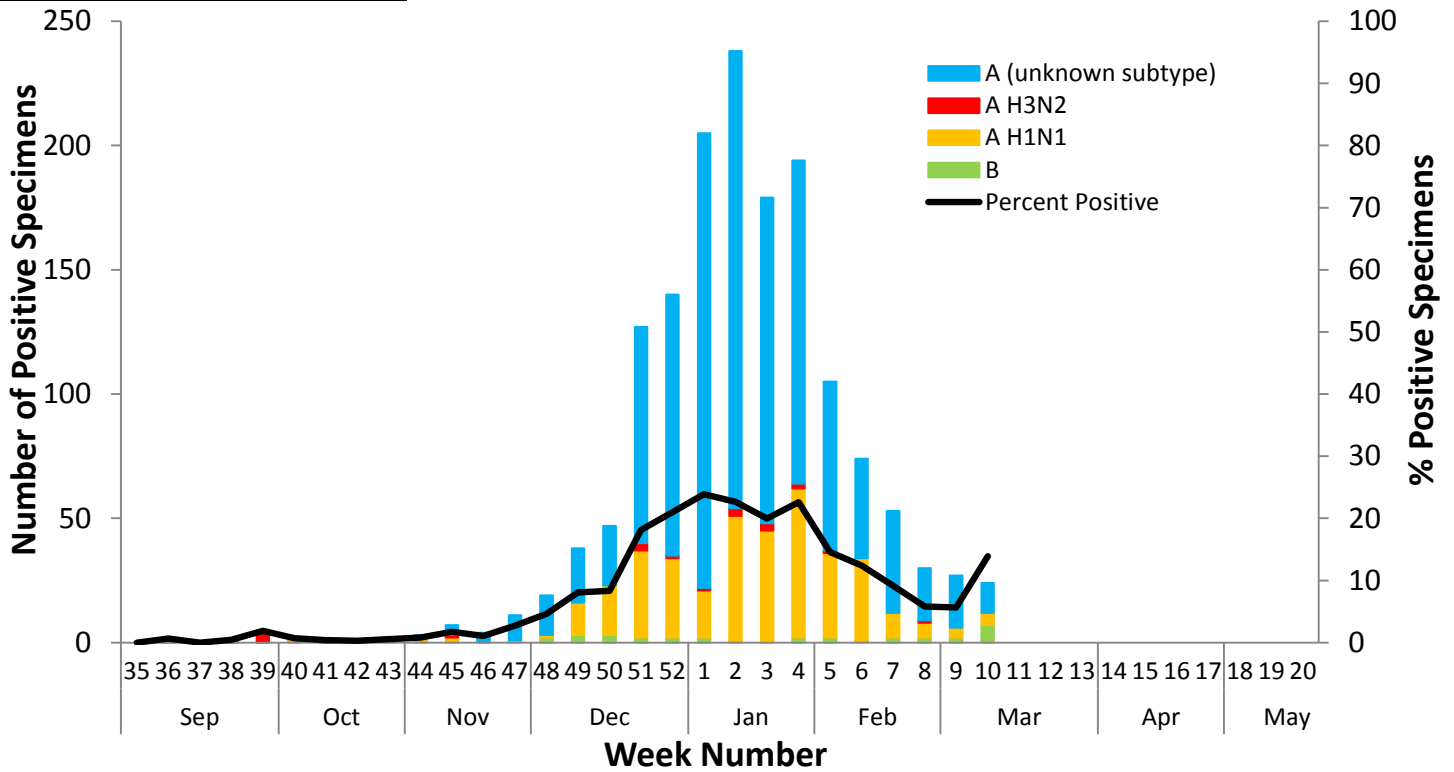
III. Syndromic Surveillance by Age Group Data¹



IV. Sentinel Provider Data²

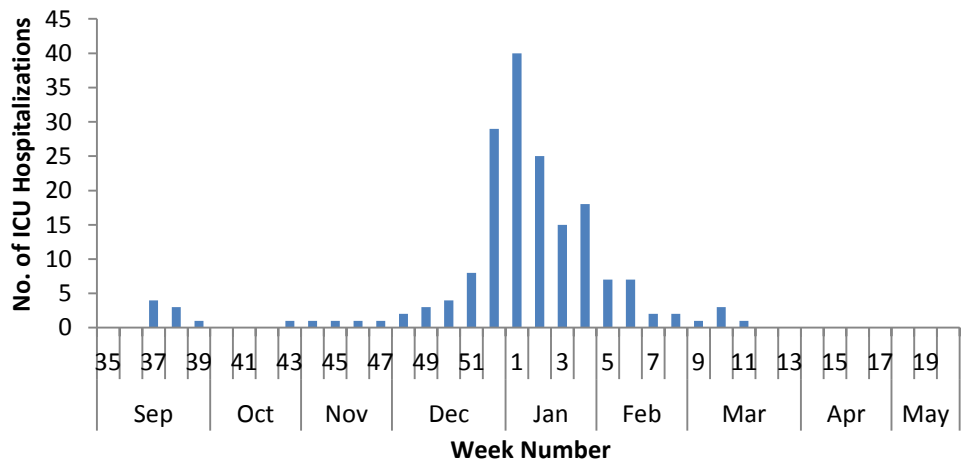


V. Laboratory Surveillance Data³

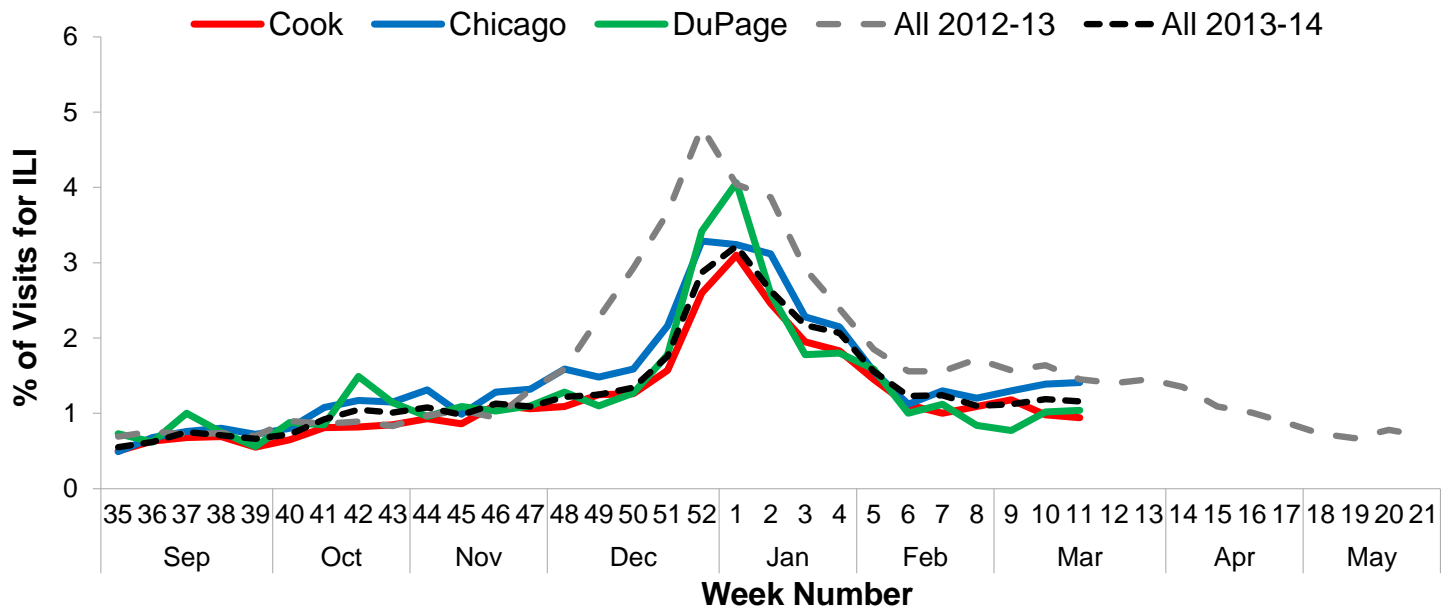


VI. ICU Hospitalization Data⁴

Hospitalized Case Counts		#
Total Cases		180
Incidence by Age		#
0-4		7
5-24		14
25-49		26
50-64		57
65+		65
Unknown		11
Incidence by Region		#
North		58
West		36
Southwest		25
South		61

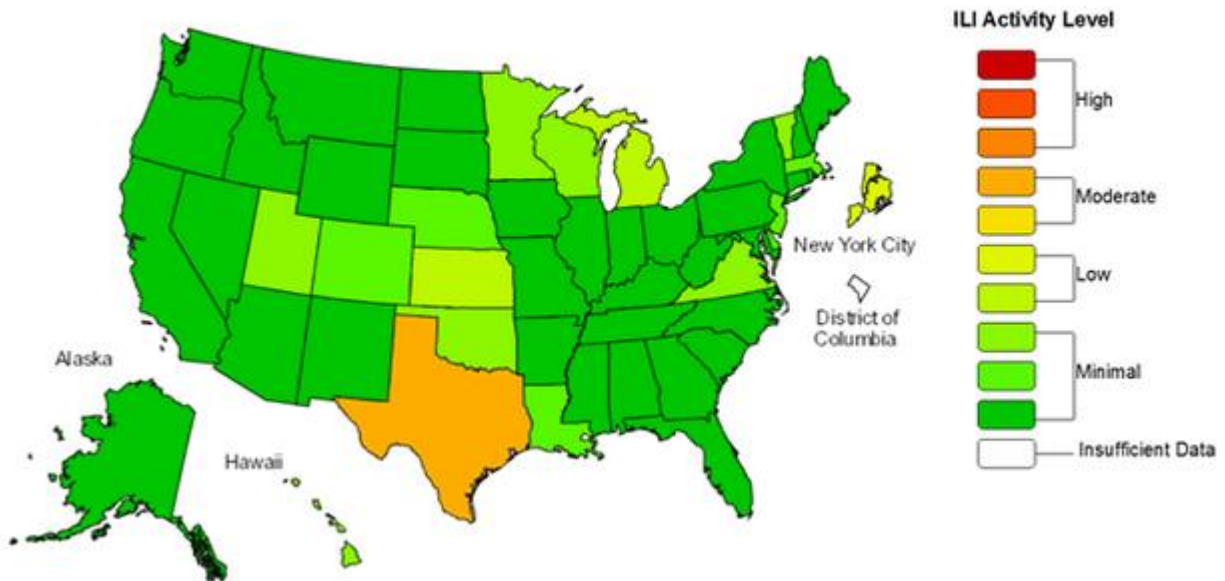


VII. Regional Data



VIII. United States Data[†]

**Influenza-Like Illness (ILI) Activity Level Indicator Determined by Data Reported to ILINet
2013-14 Influenza Season Week 11 ending Mar 15, 2014**



(All data are preliminary and may change as more reports are received.)

For further information about influenza activity see: [City of Chicago Surveillance Report](#), [IDPH Surveillance Report](#), [CDC Surveillance Report](#), [Distribute National Surveillance](#).

1. Syndromic surveillance influenza-like-illness (ILI) syndrome is defined as a symptom complex fever and cough or sore throat from ESSENCE. 45 hospital EDs participate in ESSENCE. ILI = # of ED visits for ILI / total # of ED visits.
2. ILI is defined as fever $\geq 100^{\circ}\text{F}$, cough and/or sore throat in the absence of a known cause other than influenza. 8 hospital EDs and 3 physician offices are participating CDC sentinel sites.
3. Laboratory surveillance includes viral culture, RT-PCR, and the rapid antigen test. Not all cases are suburban Cook County Residents. Participating laboratories: IDPH, NSUHS, and ACL.
4. Hospitalization and death data are only for suburban Cook County residents (excludes Evanston, Skokie, Oak Park, and Stickney). Data includes reported cases for the presented week.
5. <http://www.cdc.gov/flu/weekly/index.htm>

[†] This map uses the proportion of outpatient visits to health care providers for influenza-like illness to measure the ILI activity level within a state.