

# COOK COUNTY DEPARTMENT OF PUBLIC HEALTH

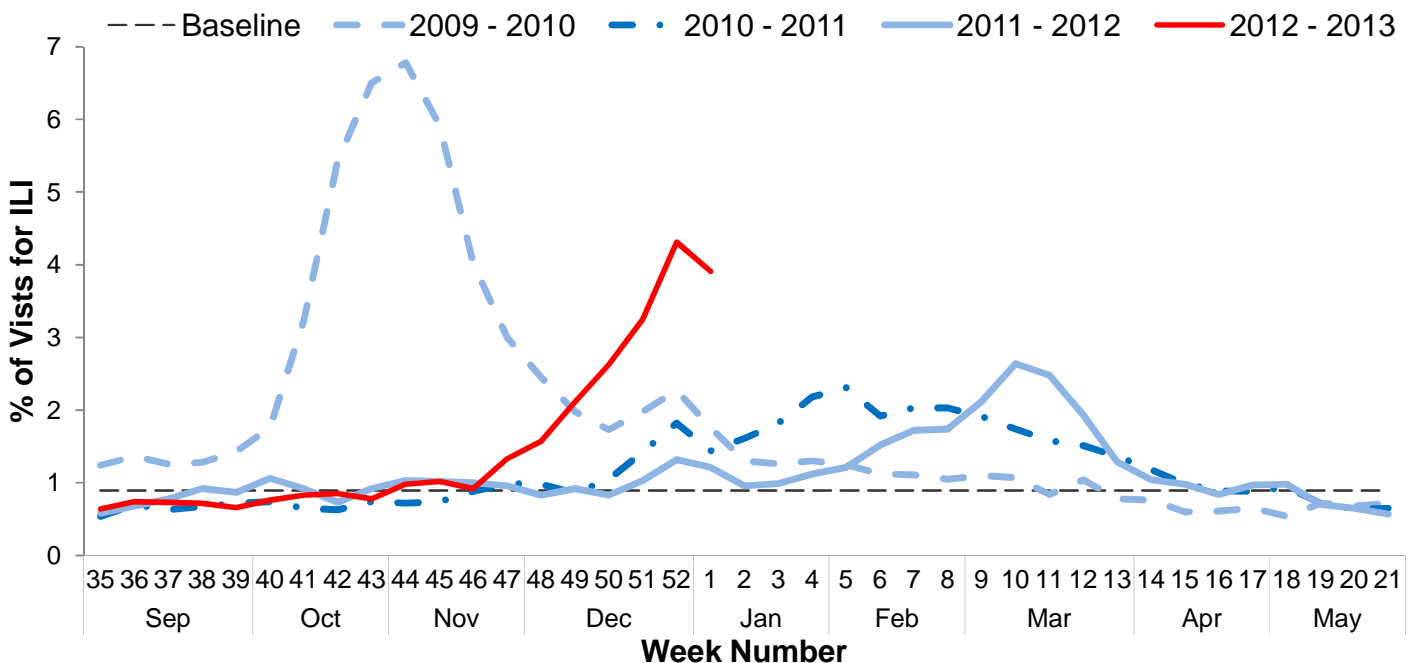


## Influenza Surveillance Report Week 1: December 30, 2012 - January 5, 2013

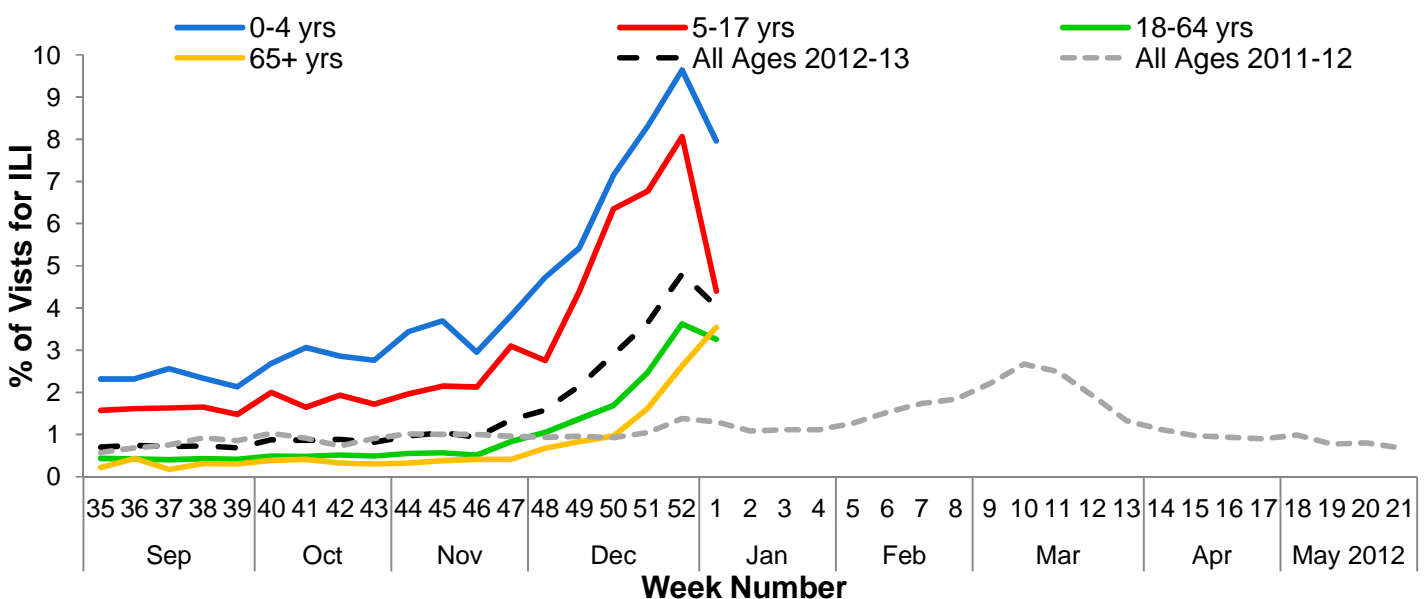
### I. Influenza Summary to Date

Influenza surveillance for suburban Cook County\*\* involves the weekly collection of data from a sample of hospitals, private physician's offices, and laboratory data. Surveillance data suggest that influenza-like-activity (ILI) is currently high. Our sentinel participants reported the following aggregate measures: Syndromic Surveillance: 3.91% ILI<sup>1</sup>, Sentinel Sites: 6.04%. Five hundred twenty-five specimens (35.9%) tested by participating laboratories were positive for influenza (312 influenza A H3N2, 191 influenza A untyped, 1 influenza A H1N1, and 21 influenza B). Since Week 35 (8/26/2012), suburban Cook County has had ninety cases of influenza-associated intensive care unit (ICU) hospitalizations. Twenty-two ICU hospitalizations due to influenza infection had onsets during week 1. Thanks to all of our surveillance partners for their help in collecting this information.

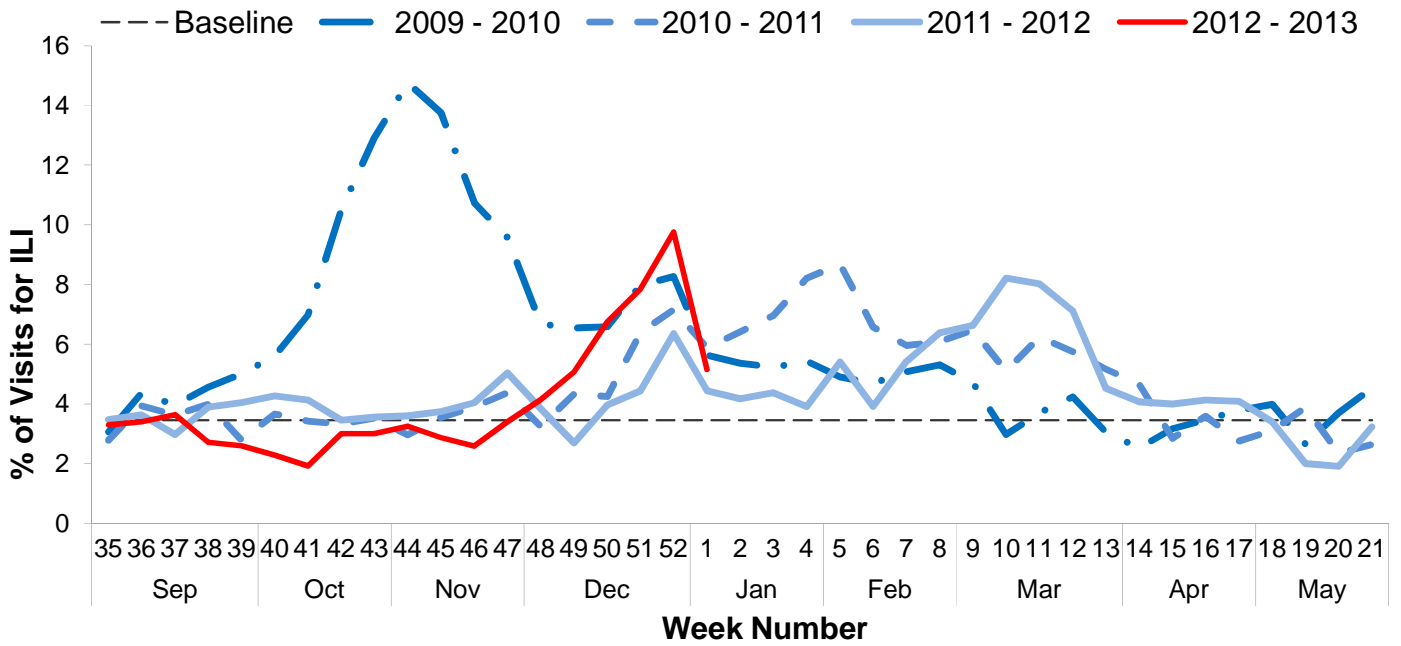
### II. Syndromic Surveillance Data<sup>1</sup>



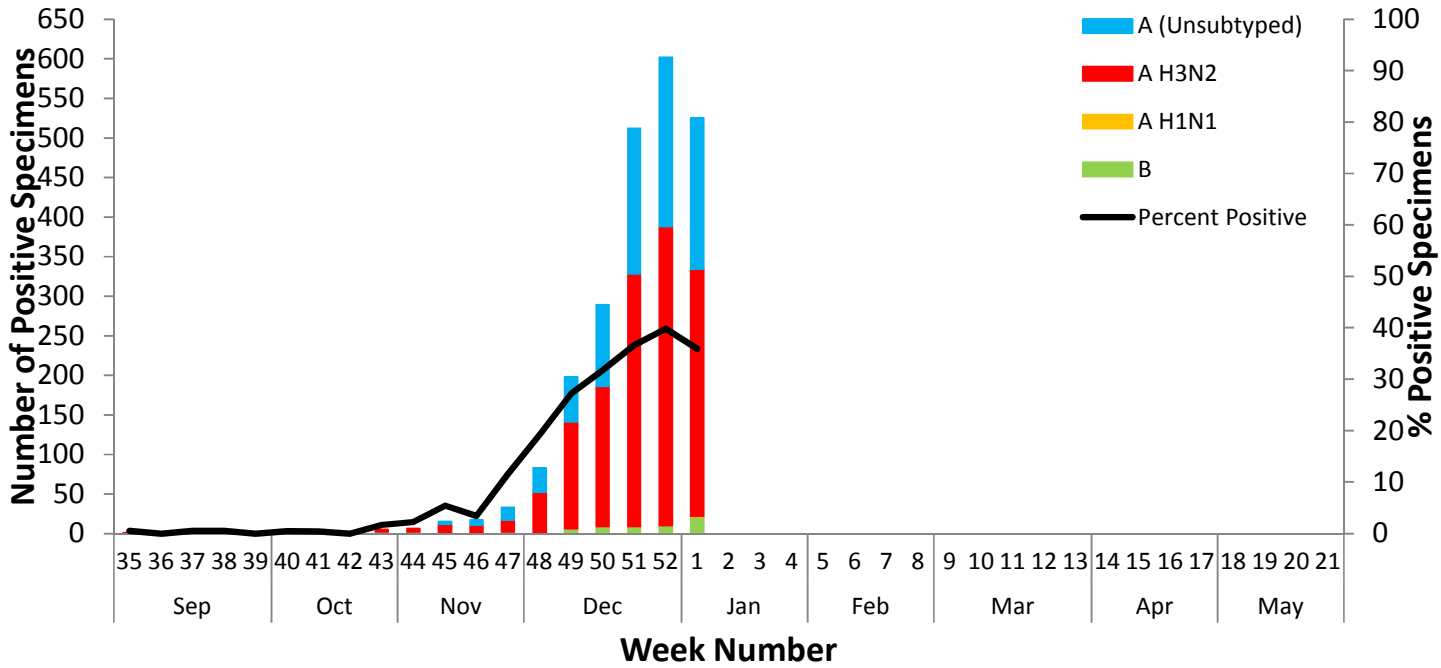
### III. Syndromic Surveillance by Age Group Data<sup>1</sup>



#### IV. Sentinel Provider Data<sup>2</sup>

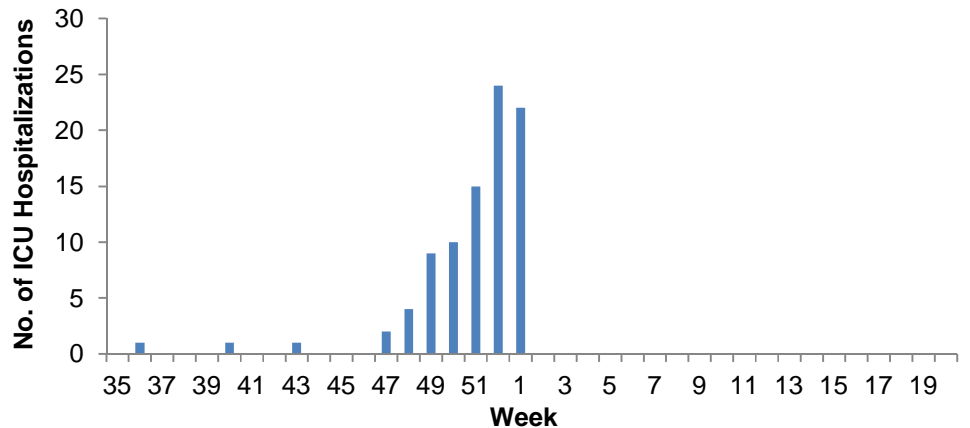


#### V. Laboratory Surveillance Data<sup>3</sup>

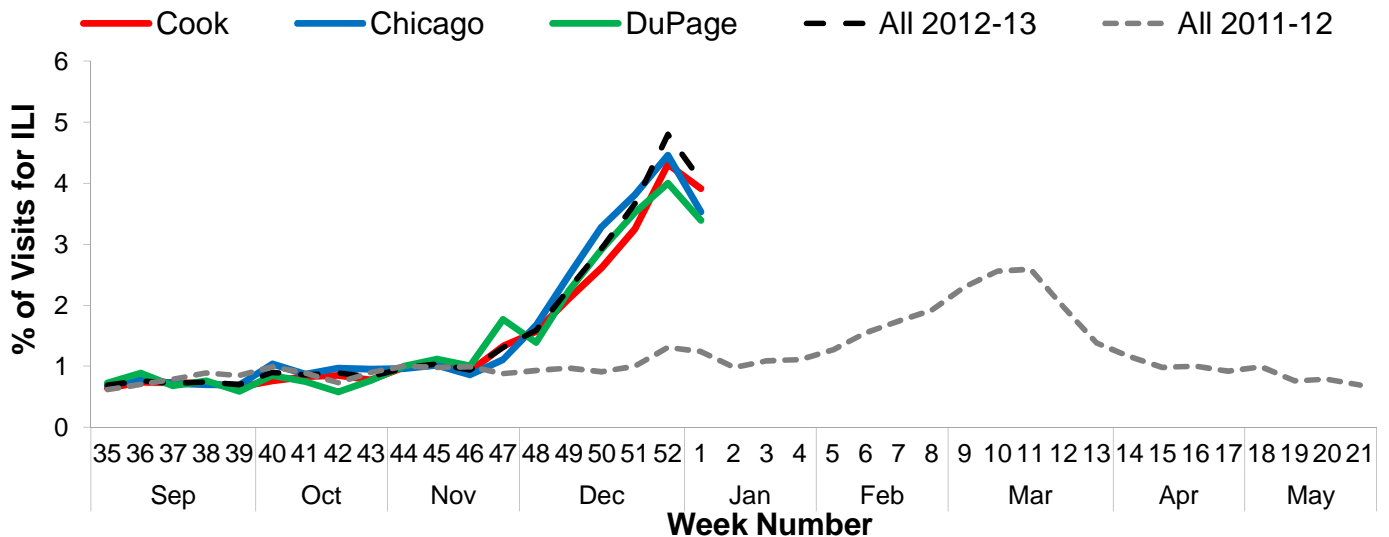


#### VI. ICU Hospitalization Data<sup>4</sup>

Hospitalized Case Counts		#
Total Cases		90
Incidence by Age		#
0-4		6
5-24		5
25-49		6
50-64		11
65+		62
Incidence by Region		#
North		43
West		14
Southwest		17
South		16



## VII. Regional Data



## VIII. United States Data<sup>†</sup>

A Weekly Influenza Surveillance Report Prepared by the Influenza Division  
Weekly Influenza Activity Estimates Reported by State and Territorial Epidemiologists\*

Week Ending January 05, 2013- Week 1



(All data are preliminary and may change as more reports are received.)

For further information about influenza activity see: [City of Chicago Surveillance Report](#), [IDPH Surveillance Report](#), [CDC Surveillance Report](#), [Distribute National Surveillance](#).

1. Syndromic surveillance influenza-like-illness (ILI) syndrome is defined as a symptom complex fever and cough or sore throat from ESSENCE. 32 hospital EDs participate in ESSENCE.  $ILI = \# \text{ of ED visits for ILI} / \text{total } \# \text{ of ED visits}$ .
2. ILI is defined as fever  $\geq 100^{\circ}F$ , cough and/or sore throat in the absence of a known cause other than influenza. 5 hospital EDs and 8 physician offices are participating CDC sentinel sites.
3. Laboratory surveillance includes viral culture, RT-PCR, and the rapid antigen test. Not all cases are suburban Cook County Residents. Participating laboratories: IDPH, NSUHS, and ACL.
4. Hospitalization and death data are only for suburban Cook County residents (excludes Evanston, Skokie, Oak Park, and Stickney). Data includes reported cases for the presented week.
5. <http://www.cdc.gov/flu/weekly/index.htm>

<sup>†</sup> **No activity:** no laboratory confirmed cases of influenza and no reported increase in cases of ILI.

**Sporadic:** small number of laboratory confirmed influenza cases or a single laboratory confirmed influenza in a single region of the state.

**Local:** Outbreaks of influenza or increases in ILI and recent laboratory confirmed influenza in a single region of the state.

**Regional:** Outbreaks of influenza or increases in ILI and recent laboratory confirmed influenza in at least two but less than half the region of the state.

**Widespread:** Outbreaks of influenza or increases in ILI cases and recent laboratory confirmed influenza in at least half the region in the state.