

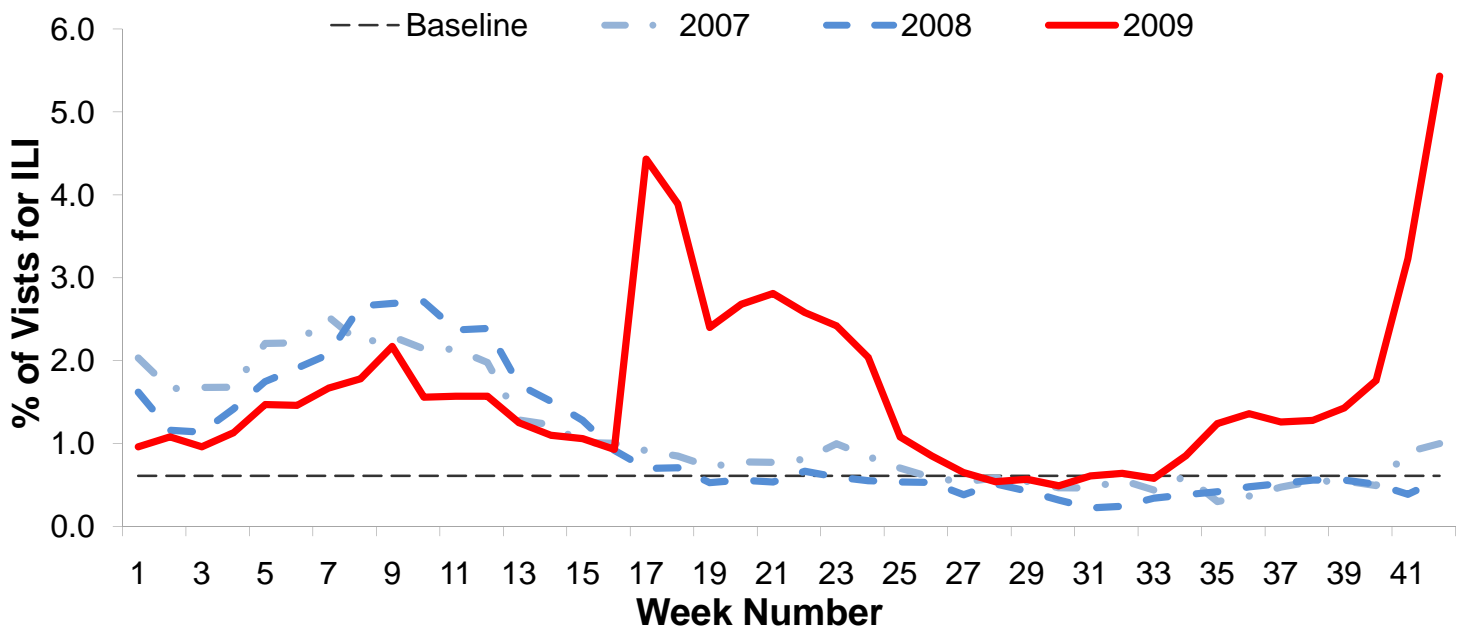


Influenza Surveillance Report
Week 42: October 18th – 24th, 2009

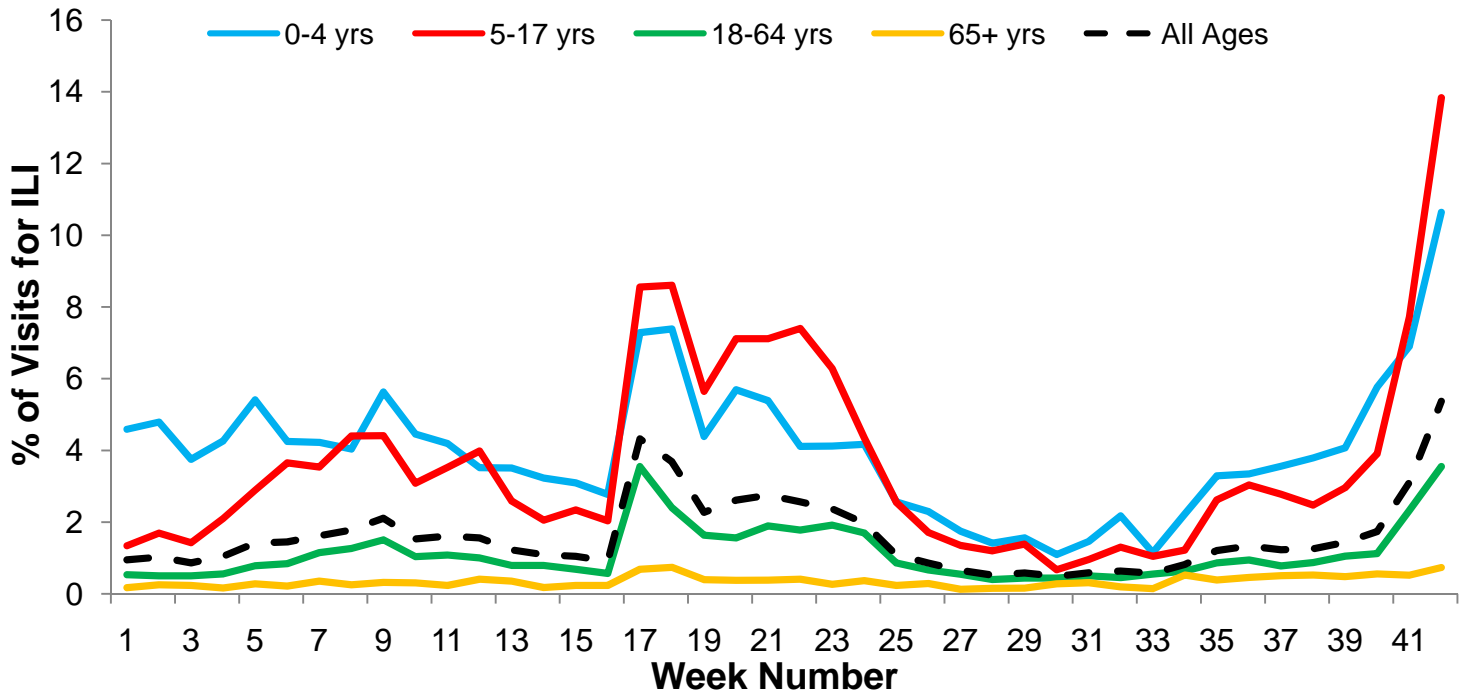
I. Influenza Summary to Date

Influenza surveillance for suburban Cook County** involves the weekly collection of data from a sample of hospitals, private physician's offices, and laboratory data. Our sentinel participants reported the following aggregate measures: Syndromic Surveillance: 5.43% ILI¹, Sentinel Sites: 10.74% ILI². 1,333 (42.66%) specimens tested by participating laboratories³ were positive for influenza, of which 100% of sub-typed influenza A viruses were 2009 H1N1. This is the fifth straight week that influenza activity has increased, and the activity level for week 42 is 70% higher than the previous week. To date, suburban Cook County has had 183 hospitalized cases of confirmed 2009 H1N1 and 6 deaths. In week 42, thirty-three 2009 H1N1 hospitalizations and one death were reported to CCDPH. Thank you to all of our surveillance partners for their help in collecting this information.

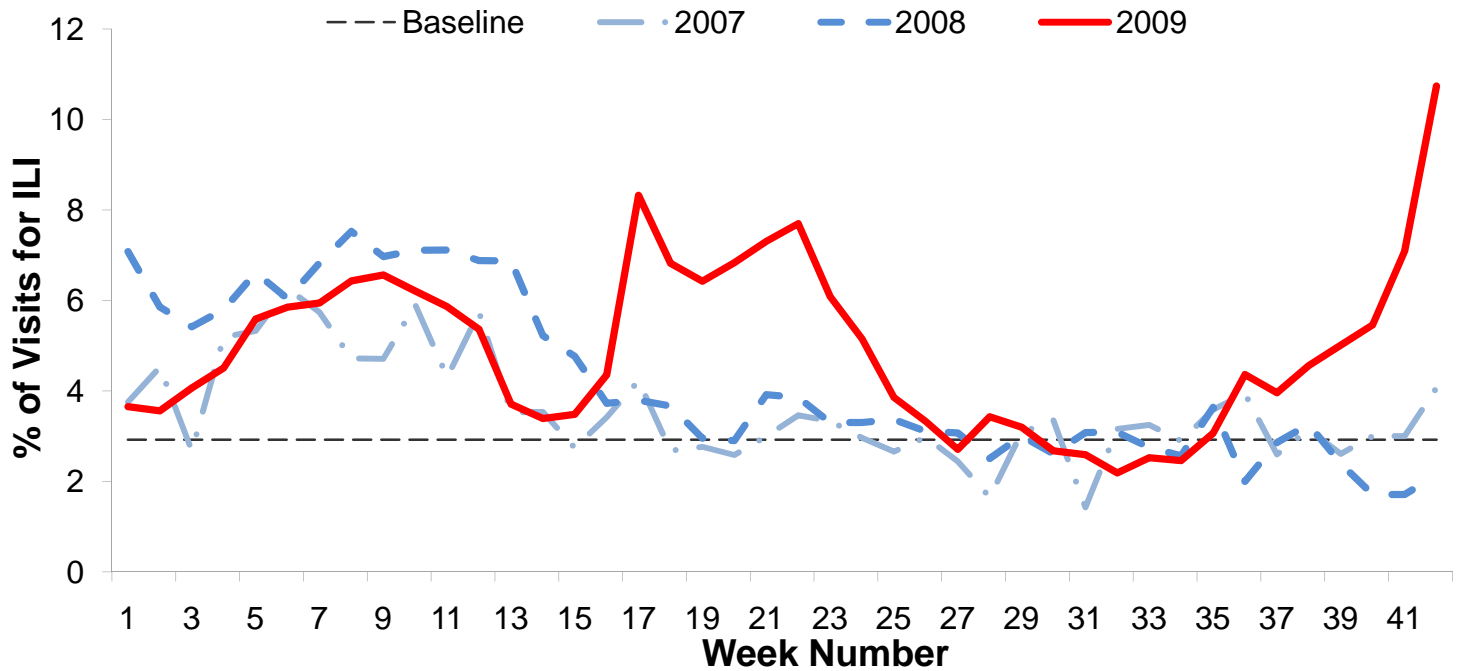
II. Syndromic Surveillance Data¹



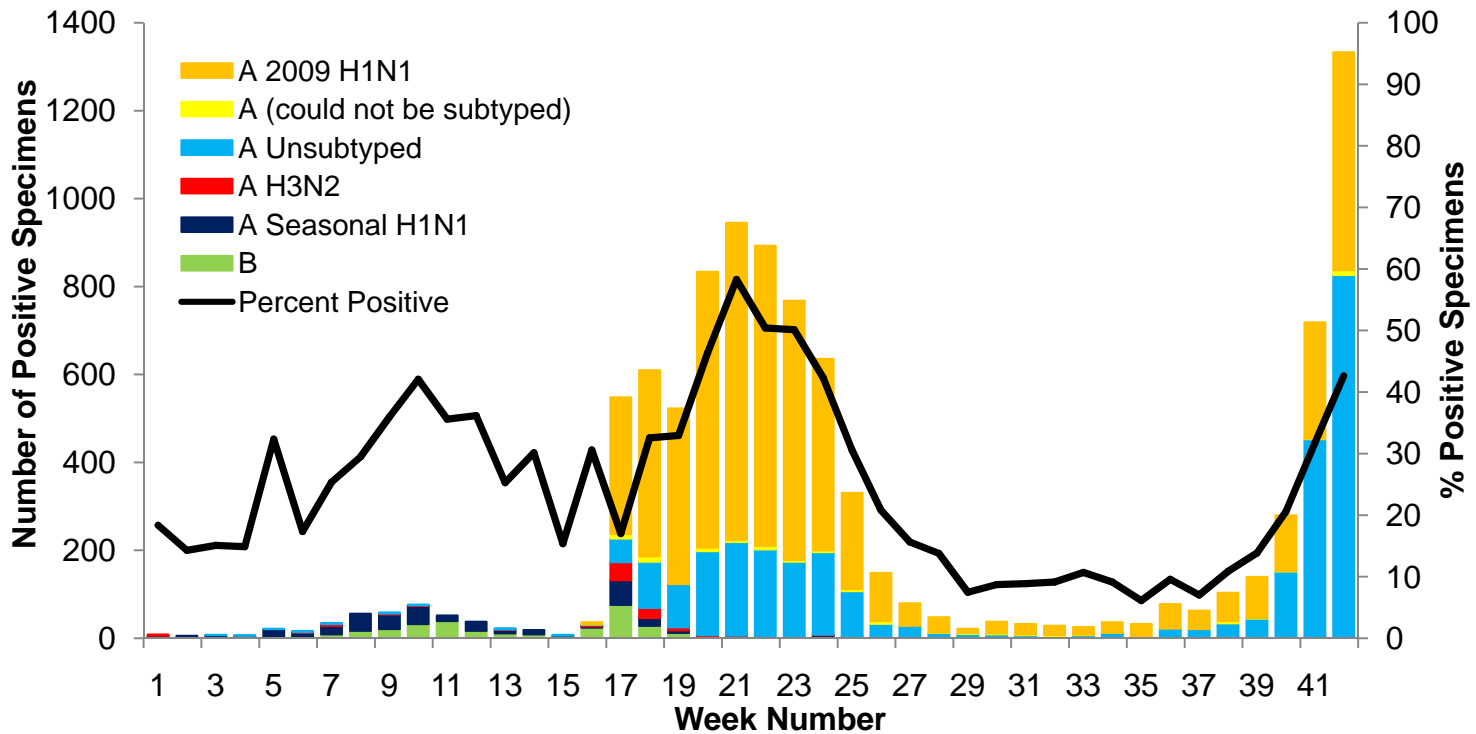
III. Syndromic Surveillance by Age Group Data¹



IV. Sentinel Provider Data²

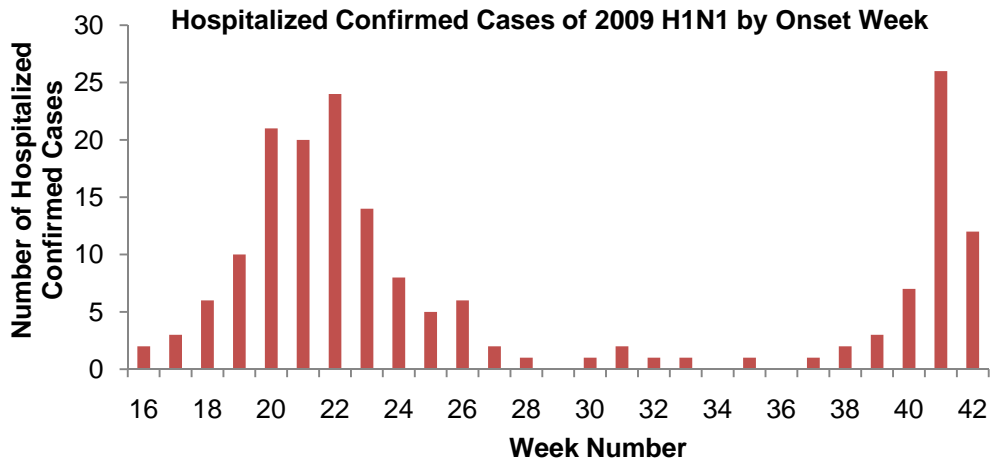


V. Laboratory Surveillance Data³

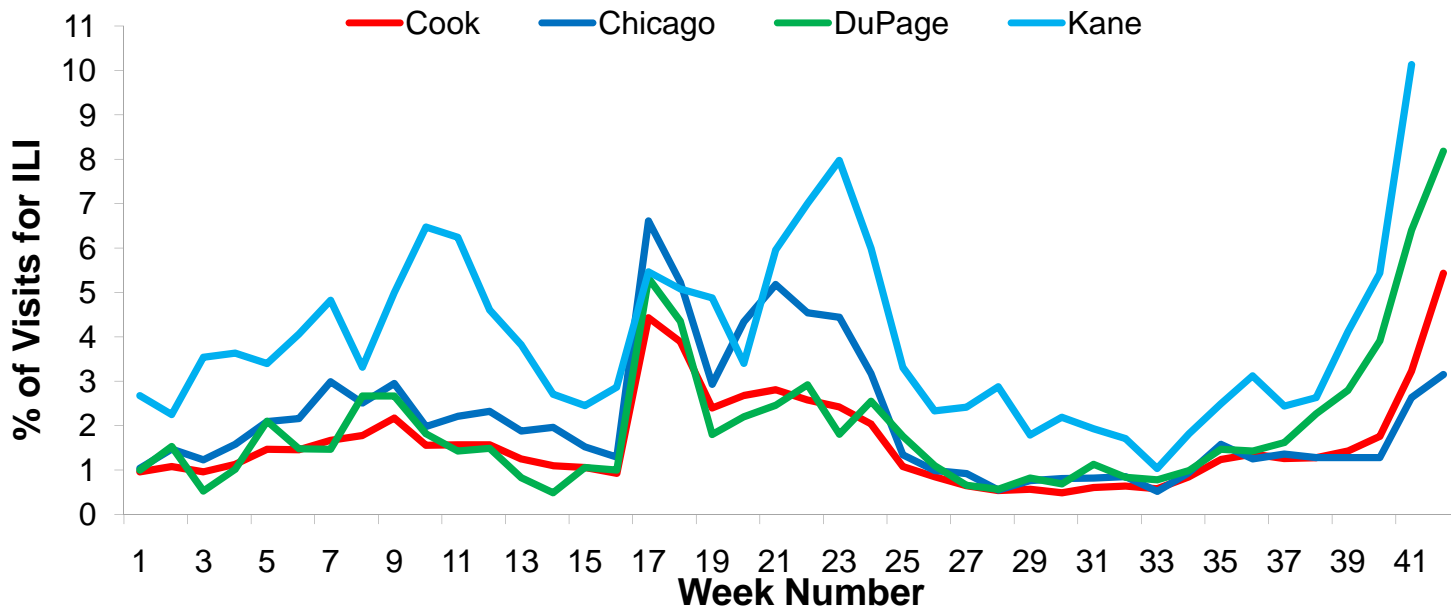


VI. 2009 H1N1 Hospitalization and Death Data⁴

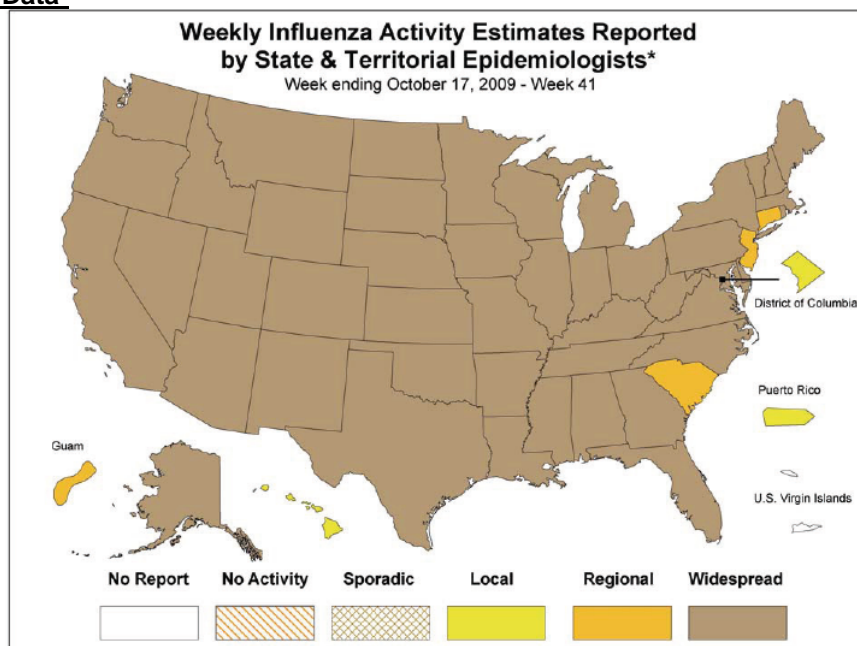
Hospitalized Case Counts		#
Total Cases		183
Total Deaths		6
Incidence by Age		#
0-4		32
5-24		62
25-49		49
50-64		28
65+		9
Unknown		3
Incidence by Region		#
North		58
West		45
Southwest		31
South		49



VII. Regional Data



VIII. Illinois and U.S. Data^{5†}



* This map indicates geographic spread & does not measure the severity of influenza activity

(All data are preliminary and may change as more reports are received.)

For further information about influenza activity see: [City of Chicago Surveillance Report](#), [IDPH Surveillance Report](#), [CDC Surveillance Report](#), [Distribute National Surveillance](#).

1. Syndromic surveillance influenza-like-illness (ILI) syndrome is defined as a symptom complex fever and cough or sore throat from ESSENCE. 32 hospital EDs participate in ESSENCE. $ILI = \# \text{ of ED visits for ILI} / \text{total } \# \text{ of ED visits}$.
2. ILI is defined as fever $\geq 100^{\circ}F$, cough and/or sore throat in the absence of a known cause other than influenza. 5 hospital EDs and 8 physician offices are participating CDC sentinel sites.
3. Laboratory surveillance includes viral culture, RT-PCR, and the rapid antigen test. Not all cases are suburban Cook County Residents. Participating laboratories: IDPH, NSUHS, and ACL.
4. Hospitalization and death data are only for suburban Cook County residents (excludes Evanston, Skokie, Oak Park, and Stickney). Data includes reported cases for the presented week.
5. <http://www.cdc.gov/flu/weekly/index.htm>

† **No activity:** no laboratory confirmed cases of influenza and no reported increase in cases of ILI.

Sporadic: small number of laboratory confirmed influenza cases or a single laboratory confirmed influenza in a single region of the state.

Local: Outbreaks of influenza or increases in ILI and recent laboratory confirmed influenza in a single region of the state.

Regional: Outbreaks of influenza or increases in ILI and recent laboratory confirmed influenza in at least two but less than half the region of the state.

Widespread: Outbreaks of influenza or increases in ILI cases and recent laboratory confirmed influenza in at least half the region in the state.