

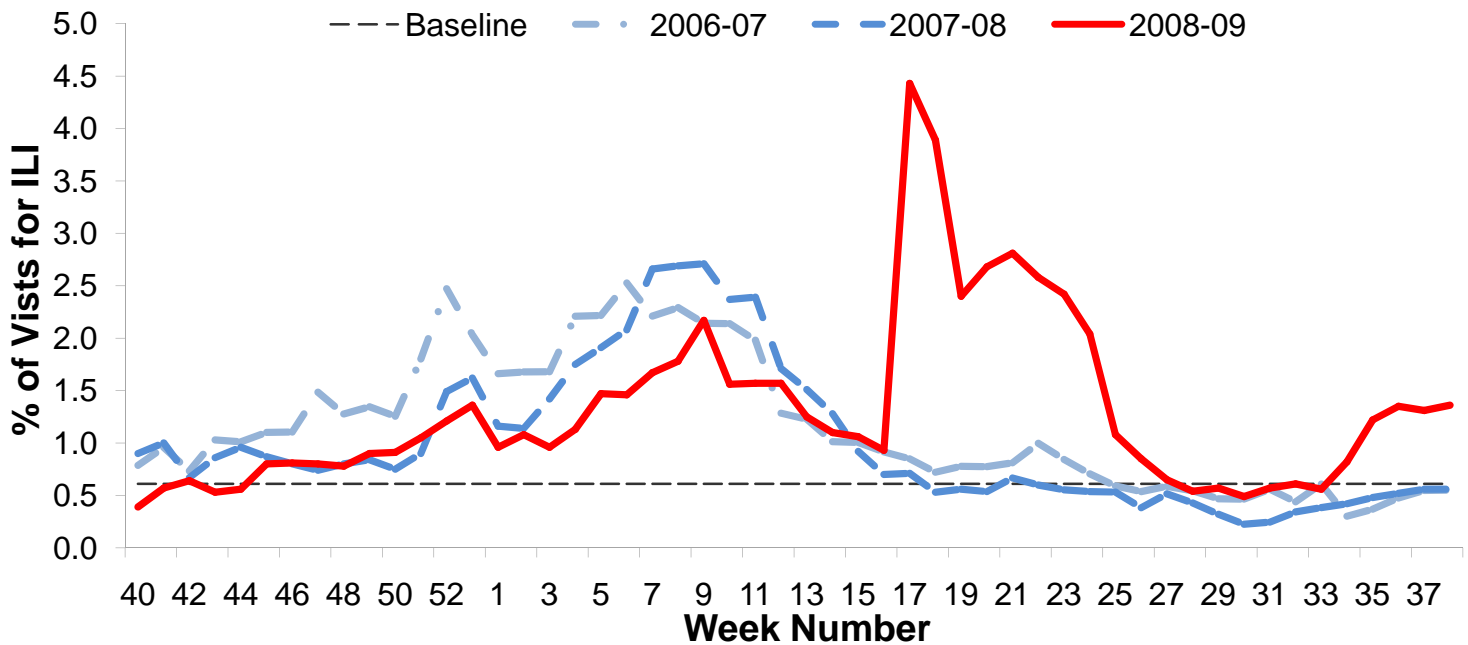


**Influenza Surveillance Report
Week 38: September 20th – 26th, 2009**

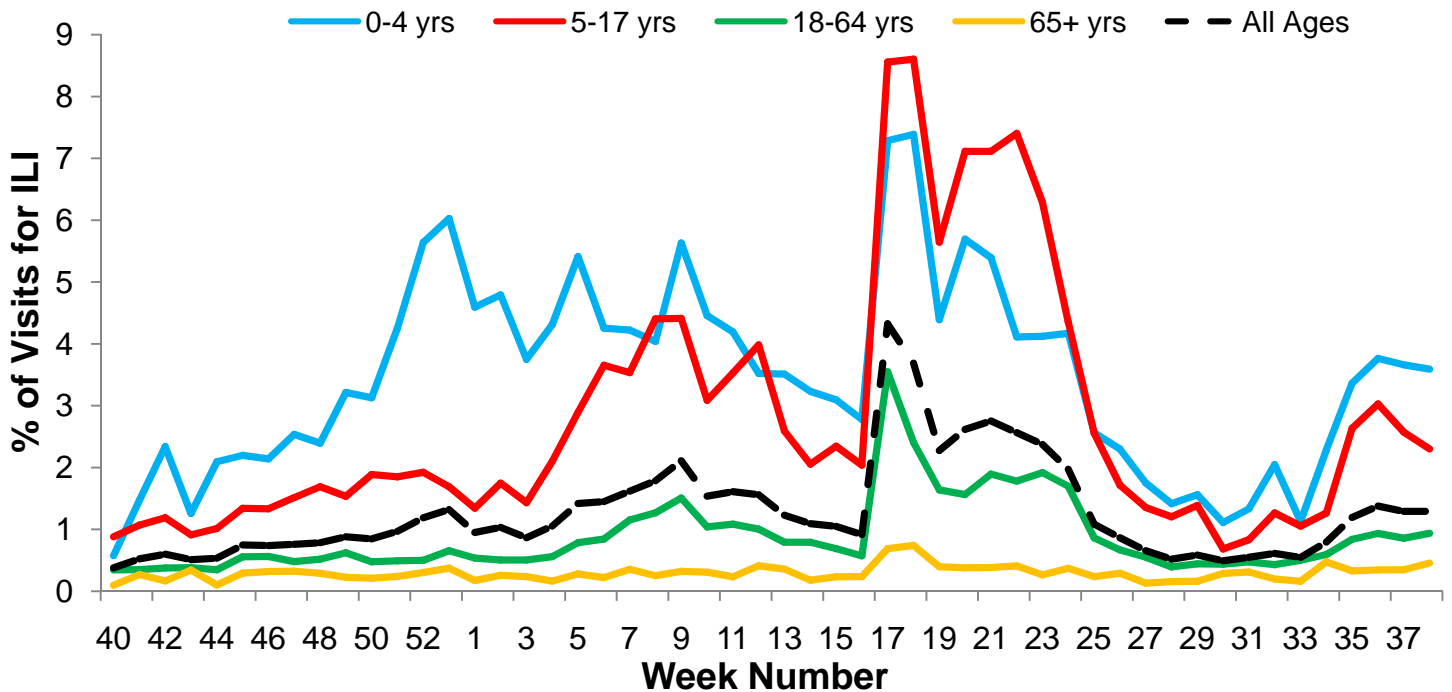
I. Influenza Summary to Date

Influenza surveillance for suburban Cook County** involves the weekly collection of data from a sample of hospitals, private physician's offices, and laboratory data. Our sentinel participants reported the following aggregate measures: Syndromic Surveillance: 1.36% ILI¹, Sentinel Sites: 4.15% ILI². Seventy-two (19.94%) specimens tested by participating laboratories³ were positive for influenza, of which 94% of sub-typed influenza A viruses were 2009 H1N1. The activity of influenza is higher than the influenza-like illness rates reported this week in each of the past two years. To date, suburban Cook County has had 130 hospitalized cases of confirmed 2009 H1N1 and 4 deaths. No hospitalized cases of 2009 H1N1 were reported for week 38. Thank you to all of our surveillance partners for their help in collecting this information.

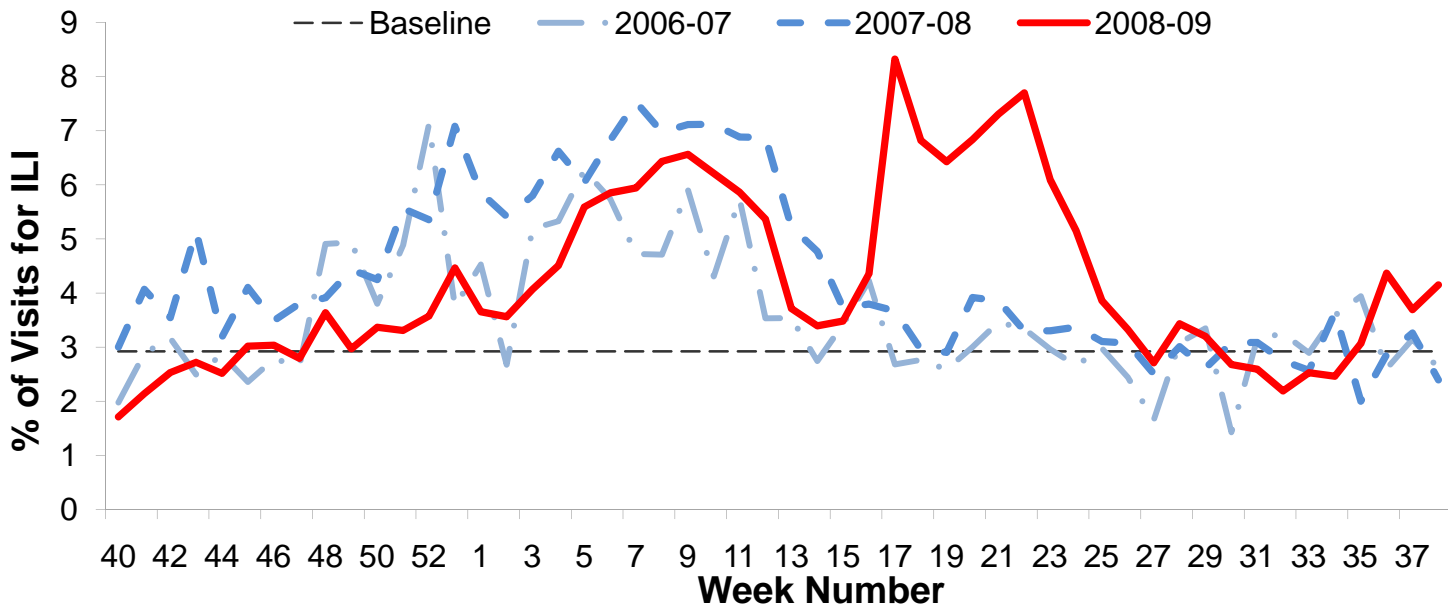
II. Syndromic Surveillance Data¹



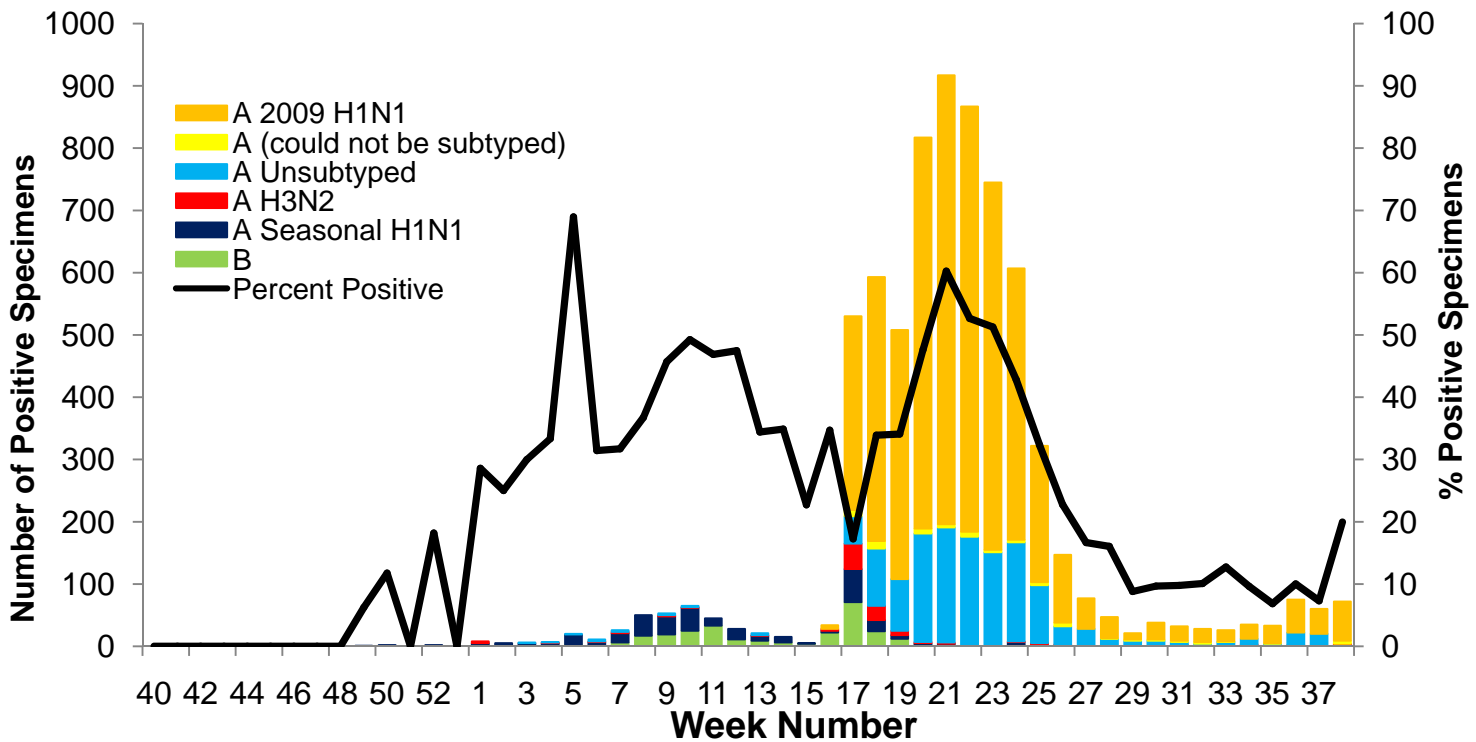
III. Syndromic Surveillance by Age Group Data¹



IV. Sentinel Provider Data²

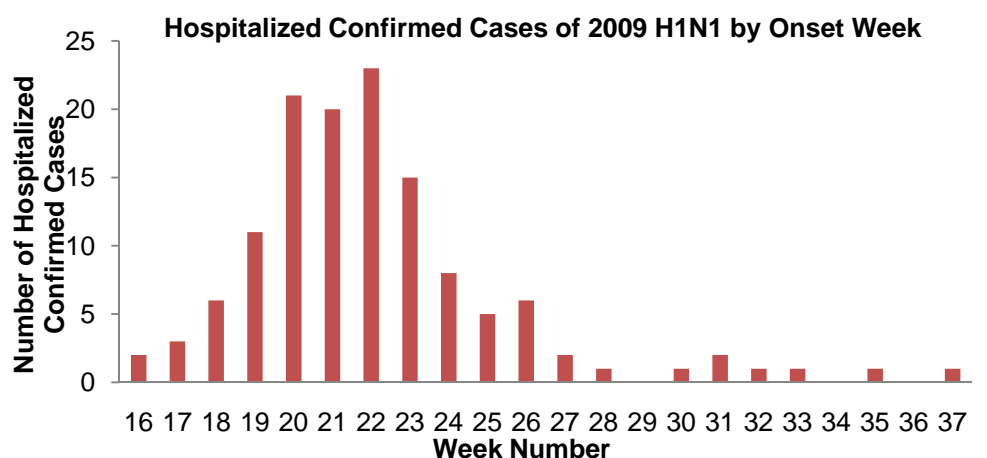


V. Laboratory Surveillance Data³

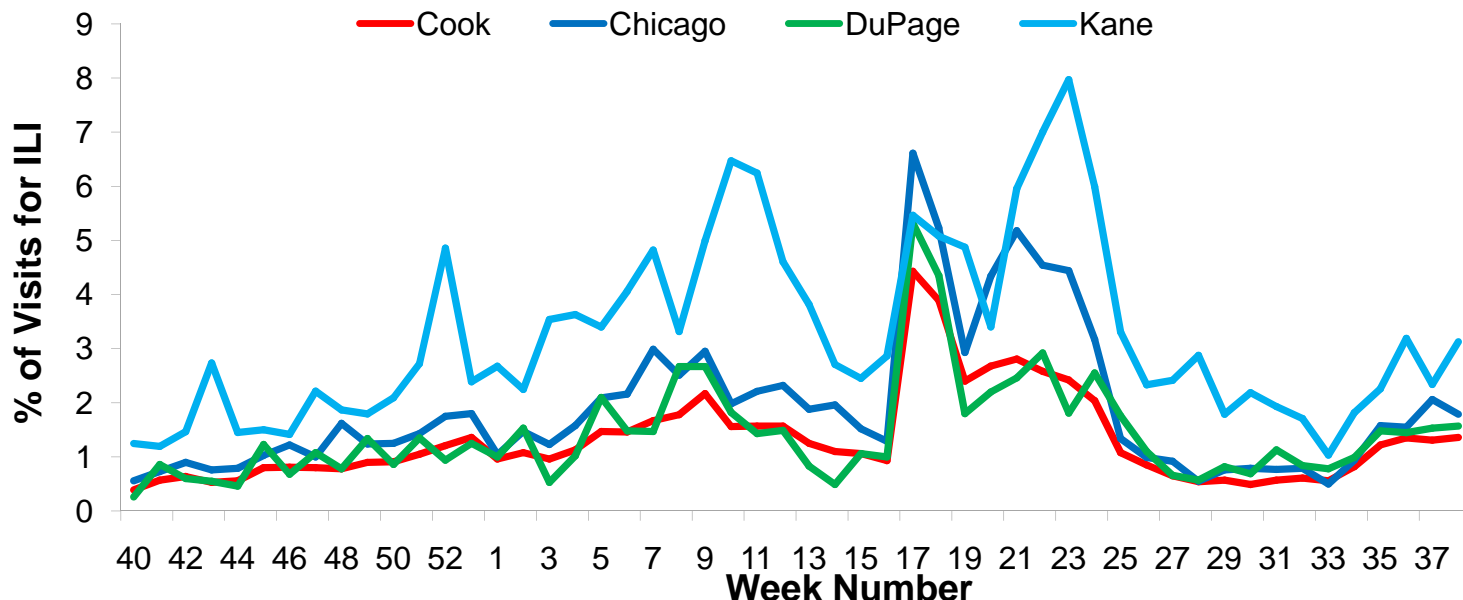


VI. 2009 H1N1 Hospitalization and Death Data⁴

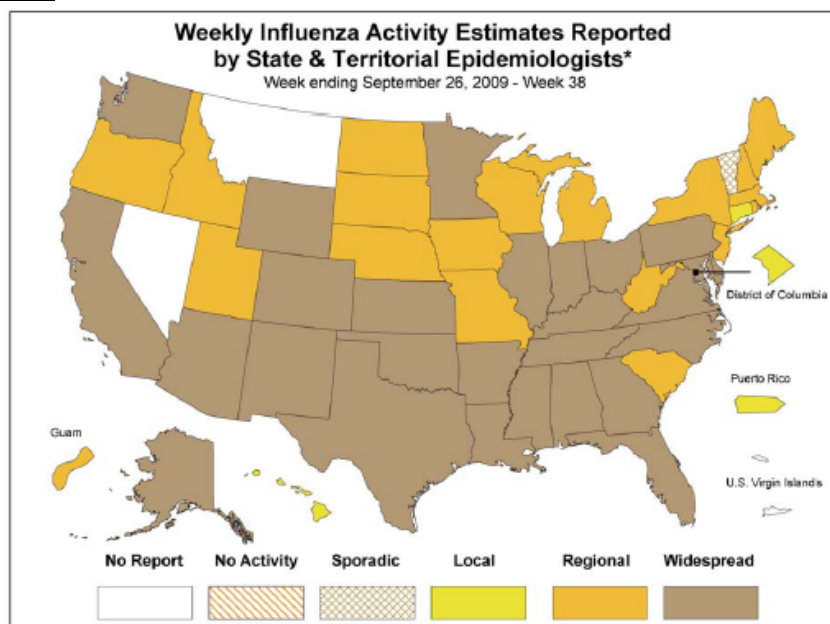
Hospitalized Case Counts		#
Total Cases		130
Total Deaths		4
Incidence by Age		#
0-4		29
5-24		41
25-49		36
50-64		19
65+		5
Incidence by Region		#
North		39
West		31
Southwest		24
South		36



VII. Regional Data



VIII. Illinois and U.S. Data^{5†}



* This map indicates geographic spread & does not measure the severity of influenza activity
(All data are preliminary and may change as more reports are received.)

1. Syndromic surveillance influenza-like-illness (ILI) syndrome is defined as a symptom complex fever and cough or sore throat from ESSENCE. 25 hospital EDs participate in ESSENCE. $ILI = \frac{\# \text{ of ED visits for ILI}}{\text{total } \# \text{ of ED visits}}$.
2. ILI is defined as fever $\geq 100^{\circ}F$, cough and/or sore throat in the absence of a known cause other than influenza. 5 hospital EDs and 8 physician offices are participating CDC sentinel sites.
3. Laboratory surveillance includes viral culture, RT-PCR, and the rapid antigen test. Not all cases are suburban Cook County Residents. Participating laboratories: IDPH, NSUHS, and ACL.
4. Hospitalization and death data are only for suburban Cook County residents (excludes Evanston, Skokie, Oak Park, and Stickney).
5. <http://www.cdc.gov/flu/weekly/index.htm>

† **No activity:** no laboratory confirmed cases of influenza and no reported increase in cases of ILI.
Sporadic: small number of laboratory confirmed influenza cases or a single laboratory confirmed influenza in a single region of the state.
Local: Outbreaks of influenza or increases in ILI and recent laboratory confirmed influenza in a single region of the state.
Regional: Outbreaks of influenza or increases in ILI and recent laboratory confirmed influenza in at least two but less than half the region of the state.
Widespread: Outbreaks of influenza or increases in ILI cases and recent laboratory confirmed influenza in at least half the region in the state.